



# ABILENE MPO POLICY BOARD MEETING

South Branch Library Conference Room | 4310 Buffalo Gap Road, Abilene, TX  
**Tuesday, August 20, 2024 at 12:30 p.m.**



# **1. Call to Order.**

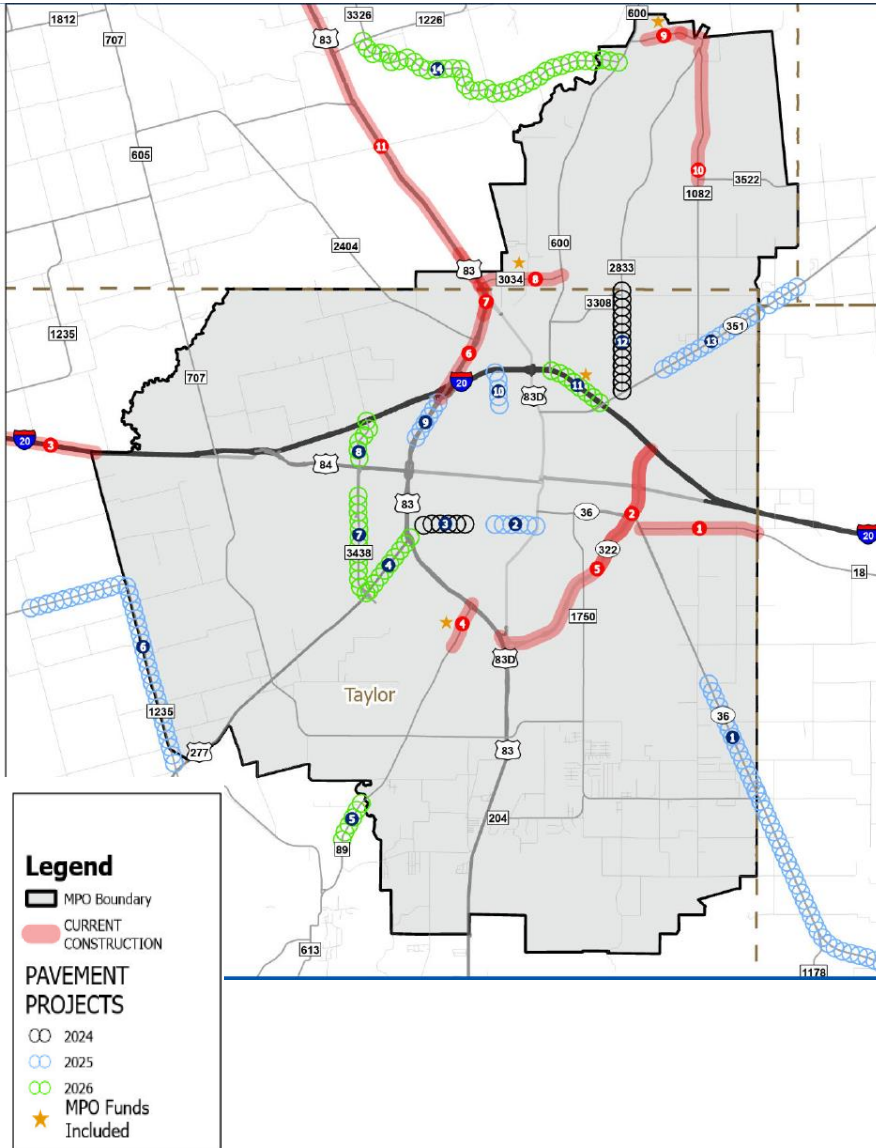
*Public comment on any item on the agenda.*

## **2. Consideration and Take Action on the minutes of the April 16, 2024 meeting.**

### **3. Discussion and review of transportation projects.**

(TxDOT Staff, City Staff, CityLink Staff)





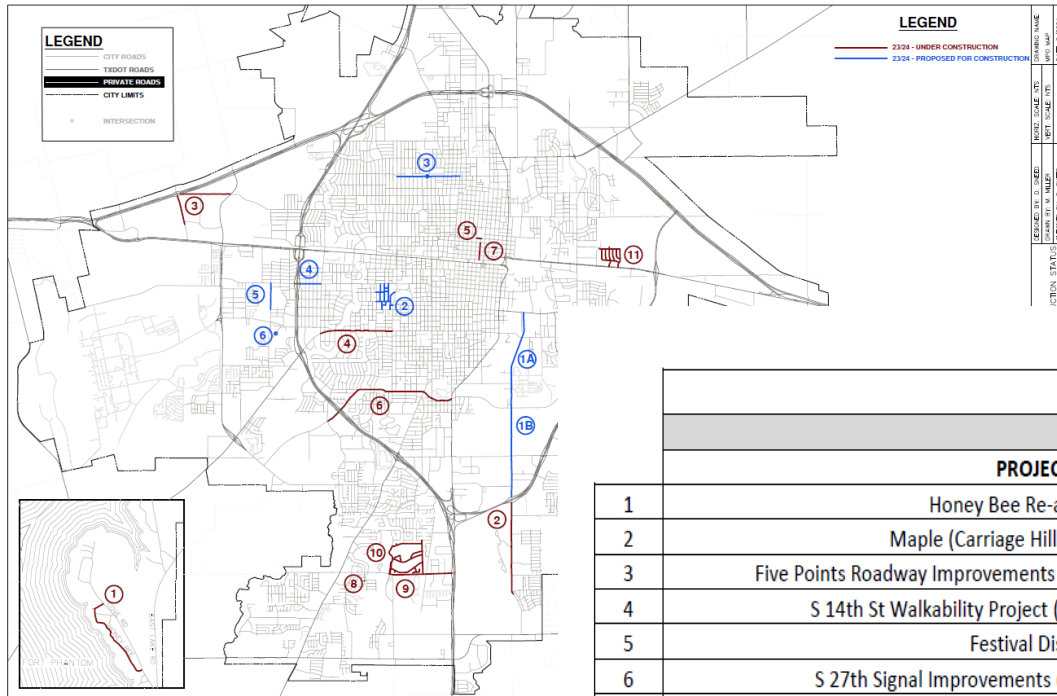
## 2024-2026 PLANNED PROJECTS

SITE	CSJ	ROADWAY	TYPE OF WORK	LIMITS FROM	LIMITS TO	FY LET
1	018101069	SH 36	Widen Road - Add Lanes	CR 123	FM 603	2025
2	090833104	14TH ST	Traffic Signal Improvements	Sayles Boulevard	BU 83D	2025
3	090833107	14TH ST	Construct Pedestrian Infrastructure	ON S 14TH ST FROM PIONEER DR	BARROW ST	2024
4	040706049	US 277	Resurface Roadway	US 83	FM 3438	2026
5	069901065	FM 89	Widen Road - Add Lanes And Shoulders	1.219 MILES SOUTH OF ELM CREEK	ELM CREEK	2026
6	066303031	FM 1235	Widen Road - Add Shoulders	CR 306	US 277	2025
7	227001029	FM 3438	Bicycle And Pedestrian Improvements	MILITARY DR	US 277	2026
8	227001027	FM 3438	Install Illumination	IH 20 NORTH FRONTAGE ROAD	NEAR 5 POINTS PARKWAY	2026
9	003306120	US 83	Hazard Elimination & Safety	1300 FT N OF AMBLER	N 10TH ST	2025
10	090833112	OLD ANSON RD	Construct Pedestrian Infrastructure	W STAMFORD ST	AMBLER BLVD	2025
11	000606109	IH 20	WIDEN FREEWAY	FM 600	SH 351	2026
12	285902014	FM 2833	Rehabilitate Existing Roadway	JONES COUNTY	SH 351	2024
13	001101040	SH 351	Preventive Maintenance	ABILENE CITY LIMITS	SHACKELFORD COUNTY	2025
14	097502023	FM 1082	Widen Road - Add Shoulders	FM 1226	FM 600	2026

## CURRENT CONSTRUCTION

SITE	CSJ	ROADWAY	TYPE OF WORK	LIMITS FROM	LIMITS TO	CONTRACTOR
1	000610011	FM 18	Rehabilitate Existing Roadway	SH 36	CALLAHAN CO LINE	J. H. STRAIN & SONS, INC.
2	239801056	SL 322	Hazard Elimination & Safety	N 10TH ST	LYTLE CREEK	ROADWAY SPECIALTIES, INC.
3	000604080	IH 20	Preventive Maintenance	NOLAN COUNTY LINE	NEAR WELLS LANE (WB)	FOUTSCO PAVING COMPANY, LLC
4	090800106	FM89	WIDEN ROADS-ADD LANES	NEAR BETTES LANE	JUST NORTH OF US 83	A. L. HELMCAMP, INC.
5	090800130	SL 322	Install Intelligent Vehicle Highway System	VARIOUS	INSIDE ABILENE MPO BOUNDARY	FLORIDA TRAFFIC CONTROL DEVICES, INC.
6	003306123	US 83	Hazard Elimination & Safety	BUS 83 INTERCHANGE	1300' NORTH OF AMBLER AVE	ROADWAY SPECIALTIES, INC.
7	003306121	US 83	Widen Road - Add Shoulders	JONES COUNTY LINE	TAYLOR COUNTY LINE	GILVIN-TERRILL, LTD.
8	306801015	FM 3034	Widen Road - Add Shoulders	US 83	FM 600	
9	097203021	FM 1082	Construct New Road	WEST OF CHEYENNE CIRCLE	EAST OF DAM	GILVIN-TERRILL, LTD.
10	097203023	FM 1082	Surfacing/Roadway Restoration	EAST OF DAM	FM 3522	J. H. STRAIN & SONS, INC.
11	003305096	US 83	Hazard Elimination & Safety	FM 707	0.25 MI NORTH OF FM 3034	ROADWAY SPECIALTIES, INC.

# City of Abilene



	City of Abilene Proposed Project for CY 2024				
	PUBLIC WORKS PROJECTS UNDER CONSTRUCTION				
	PROJECT	FUNDING SOURCE	PERCENTAGE COMPLETE	CONTRACTOR	COST ESTIMATE
1	Honey Bee Re-alignment	Fort Phantom Lot Sales Funding	91%	Bontke Brothers Construction Co., Inc.	\$ 1,948,822.45
2	Maple (Carriage Hills to Loop 322)	2021 Bond	69%	Epic Construction	\$ 6,837,216.50
3	Five Points Roadway Improvements (Fulweier Rd and Marigold St)	DCOA	90%	Epic Construction	\$ 3,451,655.00
4	S 14th St Walkability Project (Sidewalks/Ped Bridges)	TxDOT	70%	Bontke Brothers Construction Co., Inc.	\$ 1,369,000.00
5	Festival District	CO/GO Funds	83%	The Crowe Group	\$ 1,871,720.00
6	S 27th Signal Improvements (Treadaway to Catclaw)	Street Maintenance Fee	5%	Willis Electric Company	\$ 738,128.40
7	Cypress Street Reconstruction	TIRZ	25%	Tienert	\$ 9,548,653.00
8	Pebble Beach Drainage Pipe Repair	Street Maintenance Fee/Stomwater	10%	Bontke Brothers Construction Co., Inc.	\$ 112,723.00
9	Antilley and Memorial Traffic Signal Improvements	Street Maintenance Fee	4%	Willis Electric Company	\$ 513,885.00
10	Work Zone S23 (Fairways)	Street Maintenance Fee	94%	Bontke Brothers Construction Co., Inc.	\$ 2,529,996.20
11	Work Zone N6B (Pasadena Heights)	Street Maintenance Fee	73%	Bontke Brothers Construction Co., Inc.	\$ 1,332,976.10
	GRAND TOTAL				\$ 30,254,775.65
	PUBLIC WORKS PROJECTS IN DESIGN -- PROPOSED FOR CONSTRUCTION IN CY 2024				
	PROJECT	FUNDING SOURCE	PERCENTAGE COMPLETE	BID YEAR	COST ESTIMATE
1A	Maple (S. 27th to ES 11th)	2021 Bond	95% Designed	2025	\$ 7,000,000.00
1B	Maple (Loop 322 to S. 27th)	2021 Bond	95% Designed	TBD	\$ 6,800,000.00
2	Work Zone S10A (West of Rose Park)	STreet Maintenance Fee	100% Designed	2024	\$ 1,330,000.00
3	N. 18th St. Grape to Mockingbird(Includes N. 18th & Kirkwood intersection)	STreet Maintenance Fee	100% Designed	2024	\$ 930,000.00
4	S. 7th St. (Danville to Pioneer)	Street Maintenance Fee	100% Designed	2024	\$ 780,000.00
5	Corsicana Ave. (S. 7th to Benbrook)	Street Maintenance Fee	100% Designed	2024	\$ 290,000.00
6	Andy Street Culvert	Street Maintenance Fee	50% Designed	TBD	\$ 150,000.00
	GRAND TOTAL				\$ 17,280,000.00

## CityLink Transit

(August 20, 2024 MPO meeting)

- Wrapping up of the Multimodal feasibility study
- Facility repairs and remodeling project for employee restrooms
- Parking lot project on Elm & S. 3<sup>rd</sup> ; converting the lot into parking for our vans
- Exhaust fan project for the maintenance shop; installation of up to four exhaust fans in the shop



## **4. Discussion and review of reports:**

- Financial Status
- Operation Report
  - Tasks
  - Training Sessions
  - Meetings
- Director's Report
  - Work Tasks
    - MPO Staffing
    - MPO Planning Area Boundary Update
    - Regional Safety Plan Update
    - MTP FYs 2025-2050 Timeline Review
    - FYs 2025-2028 Transportation Improvement Program (TIP)
    - Year-end Report – FY 2023 Annual Listing of Obligated Projects (ALOP)

## Financial Status

Fiscal year 2024					
October 1, 2023 thru September 30, 2024					
Date	Transaction	Additional Data	Authorization	Expenditure	Remaining Balance
10/25/2023	Work Order #1	FTA 5303/PL-112	\$69,591.60		\$69,591.60
01/23/2024	October 2023	Billing #1		\$12,653.70	\$56,937.90
01/23/2024	November 2023	Billing #2		\$17,864.15	\$39,073.75
02/16/2024	December 2023	Billing #3		\$21,283.31	\$17,790.44
03/12/2024	January 2024	Billing #4		\$14,855.64	\$2,934.80
04/23/2024	Work Order #2	FTA 5303/PL-112	\$220,802.33		\$223,737.13
07/25/2024	February 2024	Billing #5		\$13,868.05	\$209,869.08
07/25/2024	March 2024	Billing #6		\$15,864.80	\$194,004.28
07/26/2024	April 2024	Billing #7		\$16,065.82	\$177,938.46
07/29/2024	May 2024	Billing #8		\$17,524.60	\$160,413.86
08/13/2024	June 2024	Billing #9		\$31,587.08	\$128,826.78
TOTALS			\$290,393.93	\$161,567.15	\$128,826.78

*updated as of 08/13/2024*

# Operation Report

FULL DOCUMENT IS INCLUDED IN YOUR PACKET.

From April 10, 2024 through August 12, 2024, some of the tasks completed by the Abilene MPO include the following:

## MPO Transportation/Transit Planning:

### General MPO -

- Researched, composed, and published required Public Notices in the Abilene Reporter News and the MPO Website.
- Composed and published MPO Insider Newsletter for publication in July 2024.
- Researched, compiled, organized participants for the MTP Delphi Committee Meeting.
- Organized the August 2024 Policy Board and TAC Workshop.

### Maps -

- Working with COA IT Department and consultants (Resource Data, Inc.) to get a GIS specialist on board to compile maps for the MPO including creating a GIS Scope of Work.
- Created/Updated/Compiled Data on the following maps: thoroughfare map, planning area, 2020 Census map, Ride to Work Route map, Pedestrian map (citizen), traffic count map (citizen), sidewalk map info, MTP map and GIS files for consultants, bicycle facilities map info, transit map files info, TIP FYs 2023-2026, and compiled map files for GIS.

### MPO Boundary Expansion

- Reached out to surrounding areas that met qualifications to possibly joining the Abilene MPO if/when the MPO Expansion receives approval from the Governor.
- Researched, compiled, organized and gave a presentation concerning the possible Abilene MPO Expansion at surrounding area's City Council Meeting.
- Bi-Weekly meetings with consultants – AECOM on boundary.

- Prepared City Council agenda packets and presented to:  
*Buffalo Gap City Council (04/11/24) 7:00 p.m.*  
*Tye City Council (04/15/24) 6:30 p.m.*  
*Merkel City Council Meeting (04/15/24) 7:00 p.m.*  
*Lawn City Council Meeting (04/23/24) 7:00 p.m.*
- Proofed and provided data for final boundary technical memo package.

### Budget -

- Prepared TxDOT billings, financial status updates, and reviewed/reconciled budget information including purchasing cards, bills, and updated daily budget.
- Created, compiled, and submitted the 2025 budget thru the City's process and revised the 2024 budget.

### Collaboration -

- Coordinated, Created Proclamation, Set-up and Host Ride of Silence with Steamboat Mountain Club and TxDOT (Drive Safe Coalition) at McMurry University.
- Coordinated, Deliver Signs, Created Proclamation, Set-up and Host Ride Your Bike to Work with TxDOT and Kent's Harley Davidson. Includes media interviews (radio/television) on the subject.



# Director's Report

## Abilene MPO Director's Report Policy Board Meeting August 20, 2024

### Work Tasks

- **MPO Staffing**

The Transportation Planner position has been open since June 10, 2022.

- **MPO Planning Area Boundary Update**

The Abilene Metropolitan Planning Organization (MPO) currently utilizes a Metropolitan Planning Area (MPA) boundary that was last revised in 2006. In early 2022, the MPO began a process of reviewing its MPA boundary in partnership with the Texas A&M Transportation Institute (TTI). In September 2023, AECOM was recruited to provide support to the Abilene MPO to finish the boundary revision process. There were numerous committee meetings and presentations to both the Technical Advisory Committee and the Policy Board. We gave presentations to all the affected entities (Callahan County, City of Anson, City of Buffalo Gap, City of Clyde, City of Hawley, City of Lawn, City of Merkel, and City of Tuscola). The Policy Board took action to approve the changes at their April 16, 2024 meeting. On June 25, 2024, the technical memo and revised boundary information was submitted to TxDOT. We are waiting for TxDOT's final review of the document and their submittal to the Governor's Office for the final sign-off.

- **Regional Safety Plan Update**

In early 2023, it was disseminated that a new requirement for MPOs is to develop a Safety Action Plan. Currently there is funding for 23 MPO's at \$50,000 (\$1.2 million) out of the Federal State Planning and Research Funds (SPR) to develop a plan designed with local data and priorities. The MPOs are working with TxDOT and the Texas A & M Transportation Institute (TTI) to get a plan in place. On January 18, 2024, we were notified by TxDOT that the MPO Safety Planning contract was executed. The kickoff meeting was held in Austin on March 21, 2024 during the TEMPO Meeting. MPO information was provided to TTI in May of 2024. The data analysis tasks for the project was not completed by a June 26 date so the next meeting will likely occur in September at the TxDOT Planning Conference.

- **MTP FYs 2025-2050 Timeline Review**

The Metropolitan Transportation Plan (MTP) is due on December 17, 2024. It will cover years 2025 to 2050. The MTP is the long-range plan or "blueprint" and has a minimum twenty-year planning horizon with an update every five years. The MTP includes identifying present and future transportation corridors, forecasting transportation needs and growth patterns, providing estimated costs for implementation of those needs, and including other innovative approaches to transportation. The MTP is a financially constrained document but it also includes a list of additional projects that could be implemented as funding becomes available. Projects are selected based on the demand on the current system and input from the community. This document also incorporates a multimodal approach. The Policy Board at their April 16, 2024 meeting approved Huitt-Zollars, Inc. for the contract. It was also presented at the April 25, 2024 City Council meeting as the fiscal agent on record. There have been numerous meetings and data sharing.

- **FYs 2025-2028 Transportation Improvement Program (TIP)**

The Transportation Improvement Program (TIP) is the programming document for transportation projects in our area. The TIP identifies those projects from our long-range plan "Metropolitan Transportation Plan" that are being worked on during this time-period. The TIP shall cover a period of no less than four years, be updated at least every four years, and be approved by the MPO and the Governor. The FY 2025-2028 TIP was due by June 18, 2024 into the Electronic Statewide Transportation Improvement Program (ESTIP) portal. The document was submitted for public review from April 5, 2024 to 8:00 a.m. on April 15, 2024. A public hearing was held at the April 16, 2024 Policy Board meeting. The document was uploaded into the ESTIP and administrative amendments were completed to coordinate with TxDOT Connect and MTP.

- **Year-end Report – FY 2023 Annual Listing of Obligated Projects (ALOP)**

Every year the Annual Listing of Obligated Projects (ALOP) is due by December 31 to FHWA and FTA to ensure compliance. TxDOT requests that the reports be given to them by December 15 to allow time for their review. On July 31, 2024, information was provided by TxDOT on the FY 2022 ALOP and information requested by August 31<sup>st</sup>. The MPO sent in the FY 2022 ALOP information with the FHWA approval to TxDOT. We are still waiting for the FY 2023 information to complete that year-end report.

**5. Opportunity for members of the Public to make comments on MPO issues.**

**6. Opportunity for Board Members, Technical Advisory Committee Members, or MPO Staff to recommend topics for future discussion or action.**



## **7. Workshop of the Transportation Policy Board and Technical Advisory Committee**

- Introductions and Workshop Overview
- Travel Demand Model (*Presentation by Tammye Fontenot and Geena Maskey – TxDOT*)
- TxDOT Project Management (*Presentation by Michael Haithcock – TxDOT*)
- FYs 2025-2050 Metropolitan Transportation Plan (MTP) and Project Discussion (*Presentation by Bill Frawley – Huitt-Zollars, Inc.*)
- Workshop Wrap-up

# Introductions and Workshop Overview



# Travel Demand Model

*Presentation by:*

*Tammye Fontenot - TxDOT*

*Geena Maskey - TxDOT*





# ABILENE

## 2050 FORECAST TRAVEL DEMAND MODEL

Presented to Abilene MPO  
Presented by TxDOT-Transportation Planning and Programming Division  
August 2024



August 20, 2024

# Presentation Outline

---

- Travel Demand Model (TDM) Overview
  - What is A TDM
  - TDM Types
  - Roles and Responsibilities
  - Model Inputs
  - Model Development Process and Model Validation
- 2050 Forecast Year Application
  - What has changed between the base and future year applications?
    - Demographics
    - Network
    - Vehicle Miles Traveled
    - External Travel
- 2050 Forecast Application Results
- Next Steps

## What is a Travel Demand Model

---

A TDM is a mathematical tool that uses data to predict how people will travel in the future. TDMs use travel behavior, transportation systems, and socioeconomic data to help answer questions like:

Where will people travel,  
When will people travel,  
How will people travel, and  
Which route will people take.



# The Four Steps of Travel Demand Forecasting

## Trip Generation

Estimates the number of trips produced / attracted by each zone, based on factors like population, employment, and land use. (Who's traveling?)



## Trip Distribution

Determines the origin and destination of trips based on zone productions and attractions. (Where to?)



## Mode Choice

Estimates the mode of transportation (car, bus, train, bike, walk) based on factors like travel time, cost, and convenience. (What means of travel?)



## Assignment

Determine the traveler's routes from their origin to their destination, based on factors like travel time, distance, and congestion. (By what route?)

# The Importance of TDMs

---

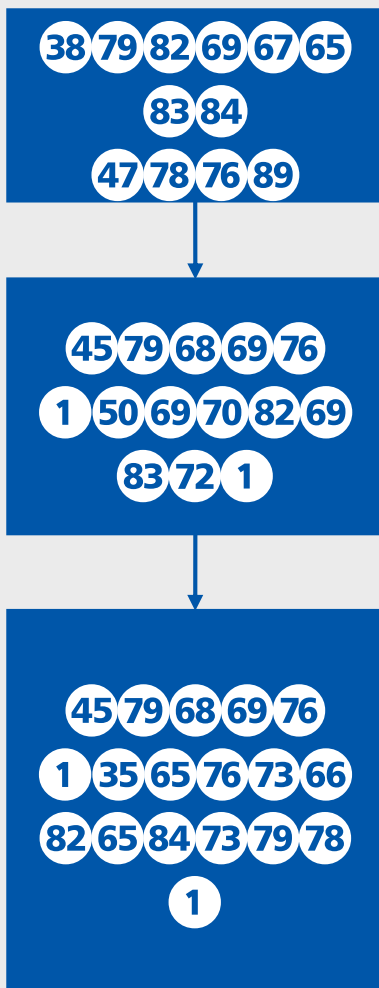
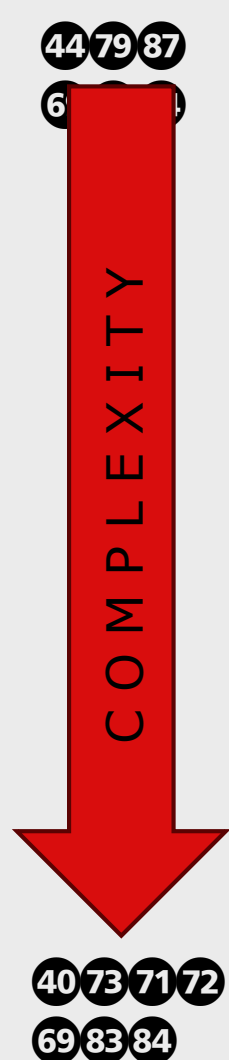
A TDM is an invaluable transportation planning tool that is used to estimate and forecast traffic flows needed to evaluate transportation systems, projects, and policies.

TDMs:

- Support MTP Development
- Evaluate System Improvements
- Identify System Deficiencies
- Conduct Alternative / Scenario Analyses
- Development of Design-Level Traffic



52 89 80 69 83    79 70    52 88 36 47 52    53 82 66 65 78    52 82 65 86 69 76    36 69 77 65 78 68    45 79



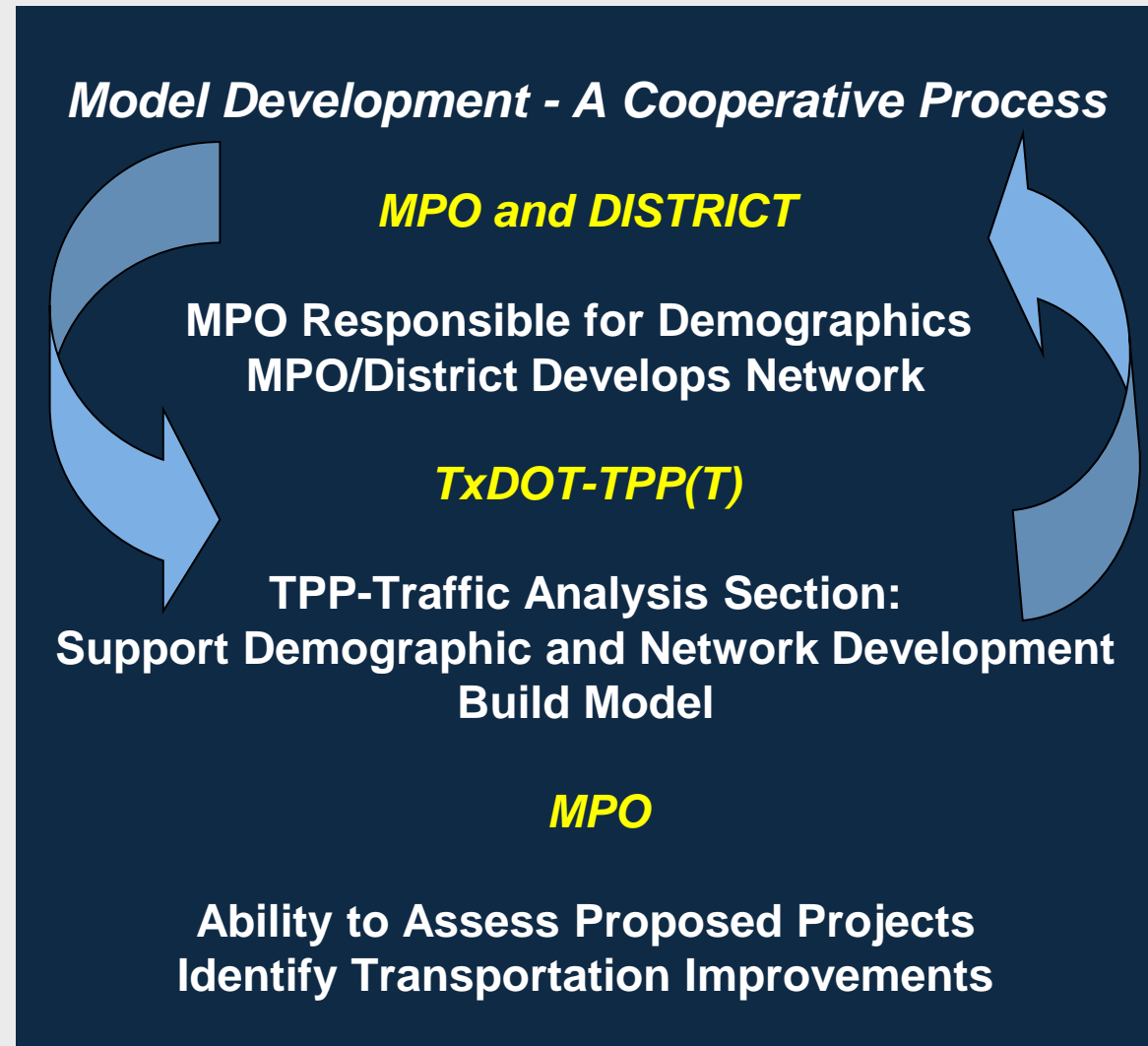
- 38 79 82 69 67 65 83 84    33 80 80 76 73 67 65 84 73 79 78    47 78 76 89 26
- 33 76 76    69 88 73 83 84 73 78 71    1 77 79 68 69 76 83 1    72 69 76 68    67 79 78 83 84 65 78 84  
87 72 73 76 69    84 72 69    45 48 47    80 82 79 86 73 68 69 83    78 69 87    70 79 82 69 67 65 83 84  
68 69 77 79 71 82 65 80 72 73 67 83    65 78 68    78 69 84 87 79 82 75 83    8 78 79  
67 65 76 73 66 82 65 84 73 79 78 15 86 65 76 73 68 65 84 73 79 78    87 79 82 75 9 14
- 50 69 70 82 69 83 72    29    46 79    46 69 87    52 82 65 86 69 76    51 85 82 86 69 89 83 26
- 37 88 73 83 84 73 78 71    48 82 79 68 85 67 84 73 79 78    6    33 84 84 82 65 67 84 73 79 78  
50 65 84 69 83 12    52 82 73 80    44 69 78 71 84 72 83    66 89    52 82 73 80    48 85 82 80 79 83 69  
65 82 69    72 69 76 68    67 79 78 83 84 65 78 84 14
- 53 80 68 65 84 69    67 79 85 78 84 83 12    68 69 77 79 71 82 65 80 72 73 67 83    6  
78 69 84 87 79 82 75    84 79    65    78 69 87    66 65 83 69    89 69 65 82 14
- 35 65 76 73 66 82 65 84 73 79 78    29    46 69 87    52 82 65 86 69 76    51 85 82 86 69 89 83 26
- 40 79 85 83 69 72 79 76 68 12    55 79 82 75 80 76 65 67 69 12    51 80 69 67 73 65 76  
39 69 78 69 82 65 84 79 82 12    35 79 77 77 69 82 67 73 65 76    54 69 72 73 67 76 69 12  
37 88 84 69 82 78 65 76    84 82 65 86 69 76 14
- 46 69 87    48 82 79 68 85 67 84 73 79 78    6    33 84 84 82 65 67 84 73 79 78    50 65 84 69 83 12  
52 82 73 80    44 69 78 71 84 72 83    66 89    52 82 73 80    48 85 82 80 79 83 69 14
- 46 69 87    66 65 83 69    89 69 65 82    68 69 77 79 71 82 65 80 72 73 67 83    8 90 79 78 65 76  
65 78 68    82 69 71 73 79 78 65 76 9    65 78 68    78 69 84 87 79 82 75 14



# Roles and Responsibilities

## Cooperative Process

- Abilene MPO
- TxDOT Abilene District
- TxDOT-TPP



# Critical Model Inputs

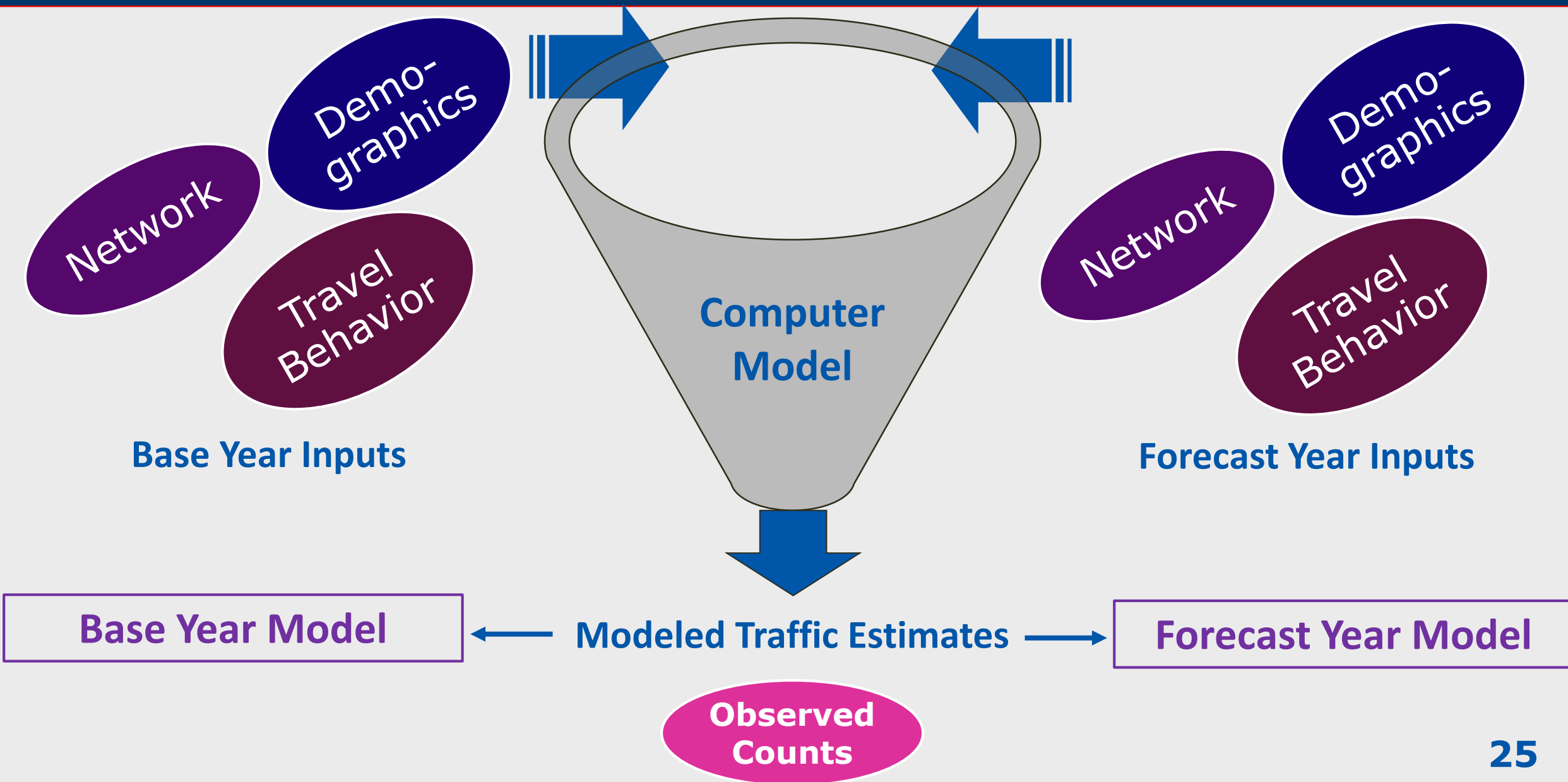
- Demographic Data

Derived from a Control Total Data developed by the State Demographer's Office and is Disaggregated into Traffic Analysis Zones (TAZs).

- Population
- Households
- Employment
- Forecast Data



- Roadway Data
  - Classification & Lanes
  - Collector and above
- Survey Data (Trip Rates)



# Demographic Database Inputs

---

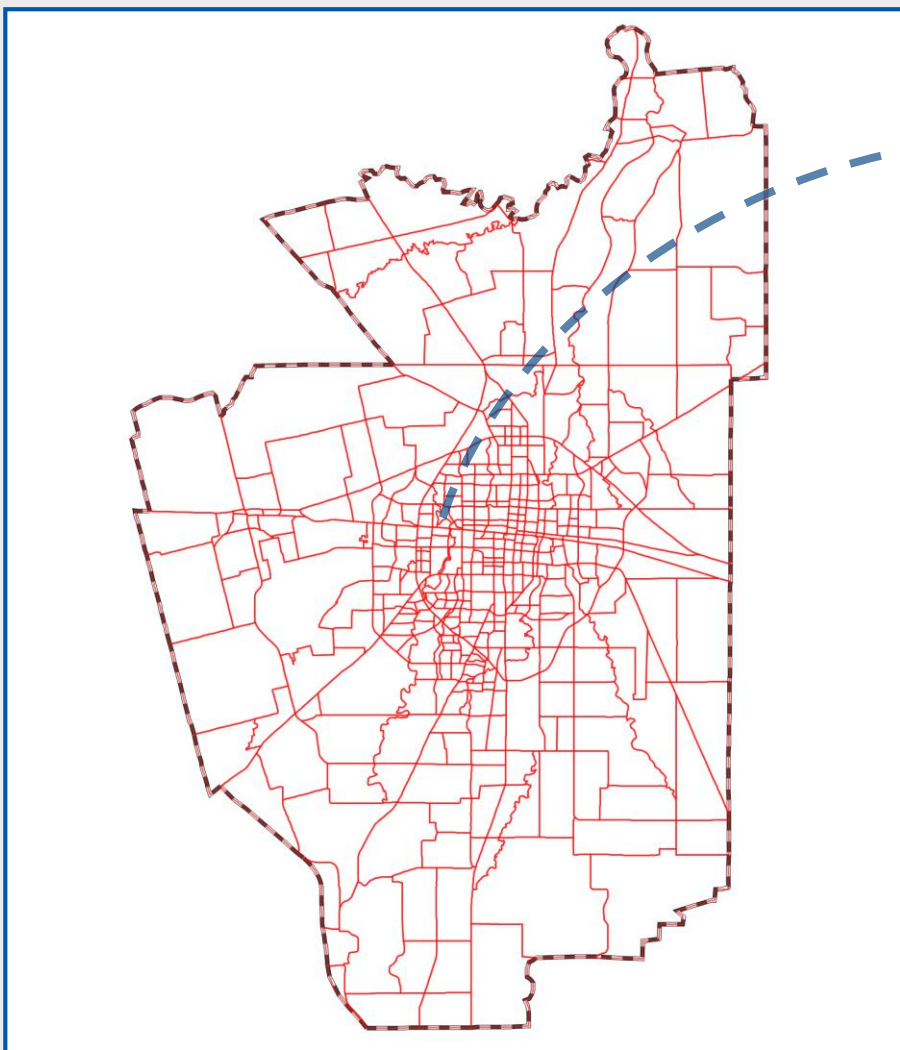
- **Population, Households and Income**
  - Developed by or Development Facilitated by the MPO
  - Based on Census (Control Total Memo) & Local Data/ Knowledge
- **Households – Produce Trips**
  - Function of Household Size & Income
  - Trips Define “Demand” for Travel

# Demographic Database Inputs

---

- **Employment – Attracts Trips**
  - Data Axle Data
  - Local Information
- **Households – Create Trips**
  - Dorms
  - Hospitals/Medical Facilities
  - High Schools
  - Mall

# Traffic Analysis Zones (TAZ)





# Network Database (Transportation System)

- Inputs

- Classification

- Freeway
    - Arterials
    - Collector

- Lanes

- Median Type

COUNTY	STREETNAME	POSTED_SPEED_15	FUNCL_15	FTYPE_15	ATYPE_15	LANES_15
TAYLOR	IH 20	75	1	1	4	2
TAYLOR	North St	—	7	20	4	2
TAYLOR	CR 287	—	6	19	4	2
TAYLOR	IH 20	75	1	1	4	2
TAYLOR	IH 20	—	1	2	4	2
TAYLOR	Ramp	—	8	21	4	1
TAYLOR	North St	—	7	20	4	2
TAYLOR	IH 20	75	1	1	4	2

- Network Importance

- Correct coding enhances model accuracy.
  - Correct project coding enhances forecasting accuracy.

# Model Validation

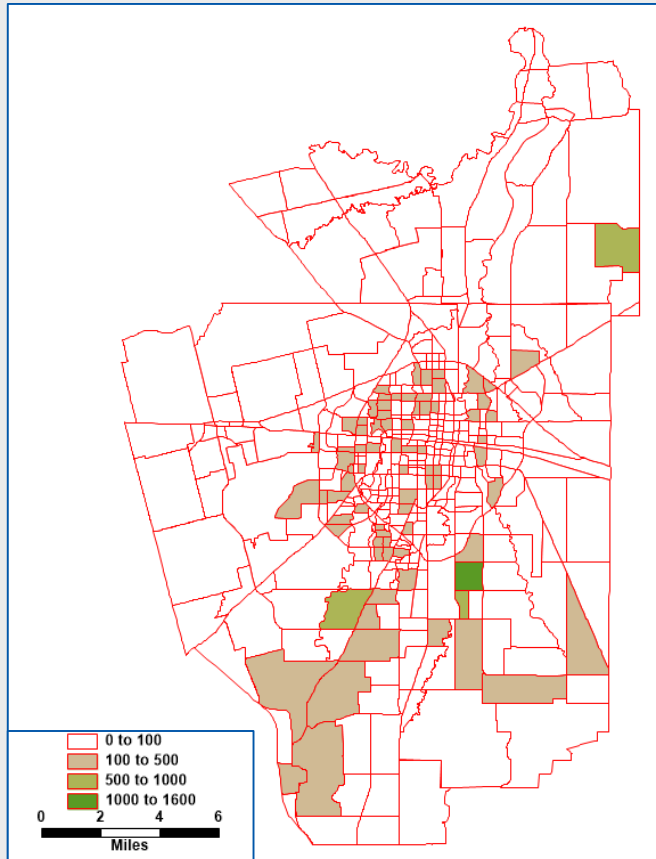
---

- **Compare Model Results to Observed Conditions**
  - Vehicle-Miles of Travel (VMT)
    - Regional Travel
    - Sub-Area & Roadway Class Travel
  - Individual Counts
    - TxDOT Collected Counts:  
(Annual, Saturation and Classification Counts)
    - Raw Data (Unfactored)

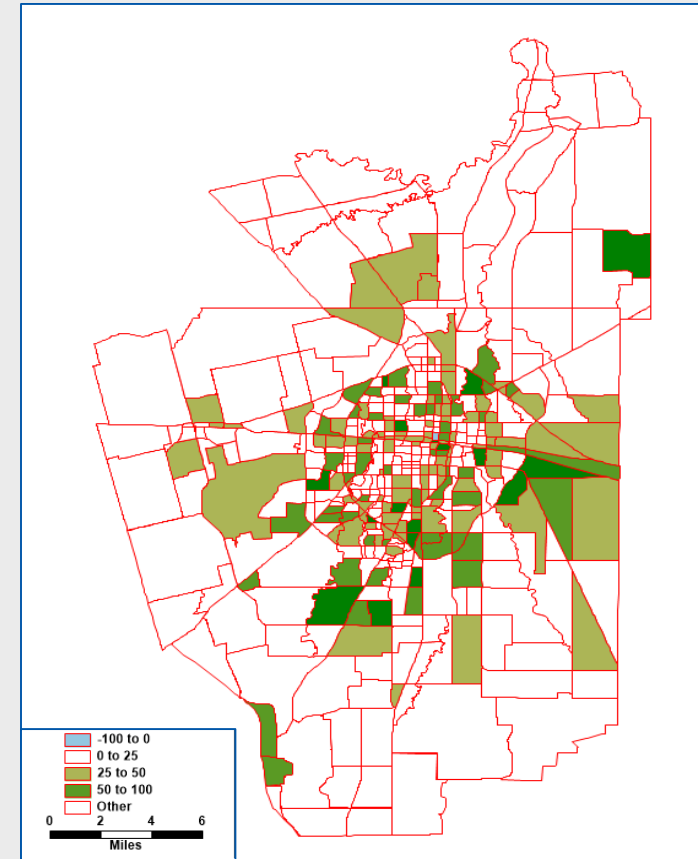
# Model Validation

COMPARISON OF COUNTED TO MODELED VEHICLE MILES OF TRAVEL			
AREA TYPE	Counted VMT	Modeled VMT	Percent
CBD	7,263	6,816	93.9%
URBAN	462,290	451,781	97.7%
SUBURBAN	228,659	219,731	96.1%
RURAL	268,181	288,525	107.6%
TOTAL	966,393	966,853	100.1%
FUNCTIONAL CLASS	Counted VMT	Modeled VMT	Percent
INTERSTATE FREEWAY	30,852	30,853	100.0%
OTHER FREEWAYS	66,579	71,617	107.6%
PRINCIPAL ARTERIALS	517,982	517,192	99.9%
MINOR ARTERIALS	242,908	240,863	99.2%
COLLECTORS	98,654	98,086	99.4%
FRONTAGE ROADS	8,033	7,118	88.6%
TOTAL	966,393	966,853	100.1%

# Demographics Data Comparisons



Population Change by Sector  
(2015 to 2050)

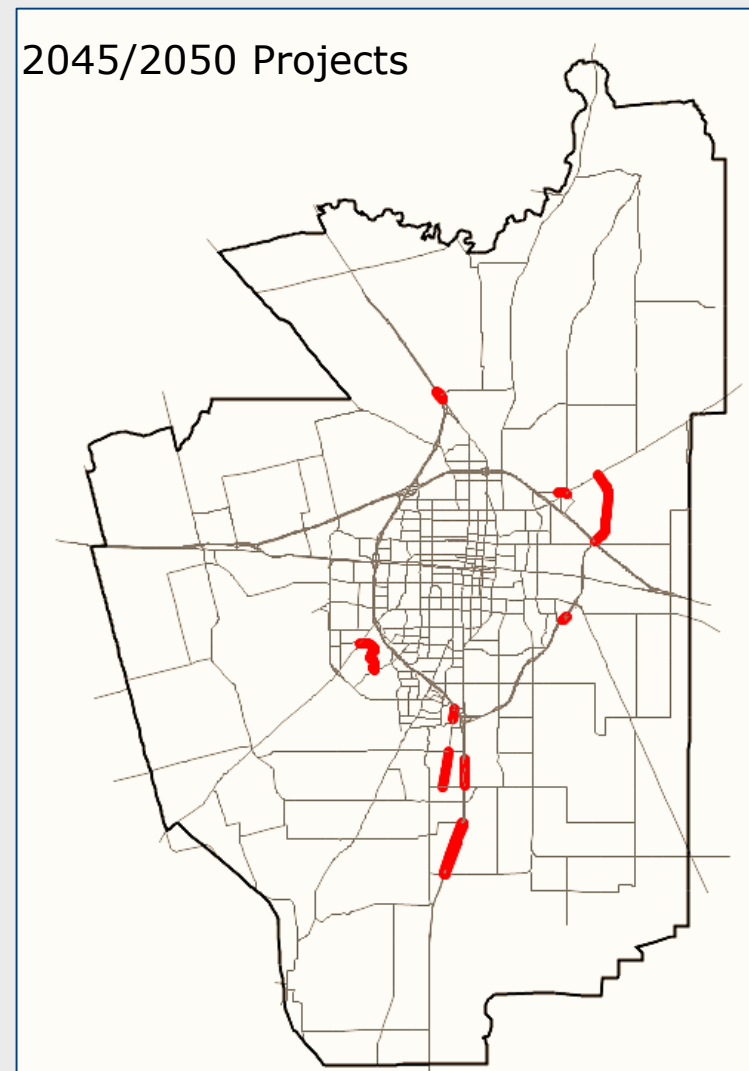


Employment Change by Sector  
(2015 to 2050)

# Abilene Future Year Network

- Network Changes (2015 to 2050)
  - New Roadways and Extensions
  - Road Widening Projects
  - Grade Separations

Roadway Type	Centerline Miles		Lane Miles	
	2015	2050	2015	2050
Interstate Freeway	40.4	42.5	83.2	126.7
Freeway	57.0	57.0	125.6	132.2
Expressway	13.8	13.8	27.8	27.8
Arterial	219.3	220.9	608.6	659.6
Collector	236.6	237.3	486.6	492.3
Frontage Roads/Ramps	112.0	117.1	188.2	197.5
<b>Total</b>	<b>679</b>	<b>688</b>	<b>1,520</b>	<b>1,636</b>



# External Travel

- External Travel Estimates

External Trip Purpose	Year	
	2015	2050
Local	78,814	119,436
Through	8,743	13,482
TOTAL	87,557	132,918

**Internal Trips Increased by 22%**

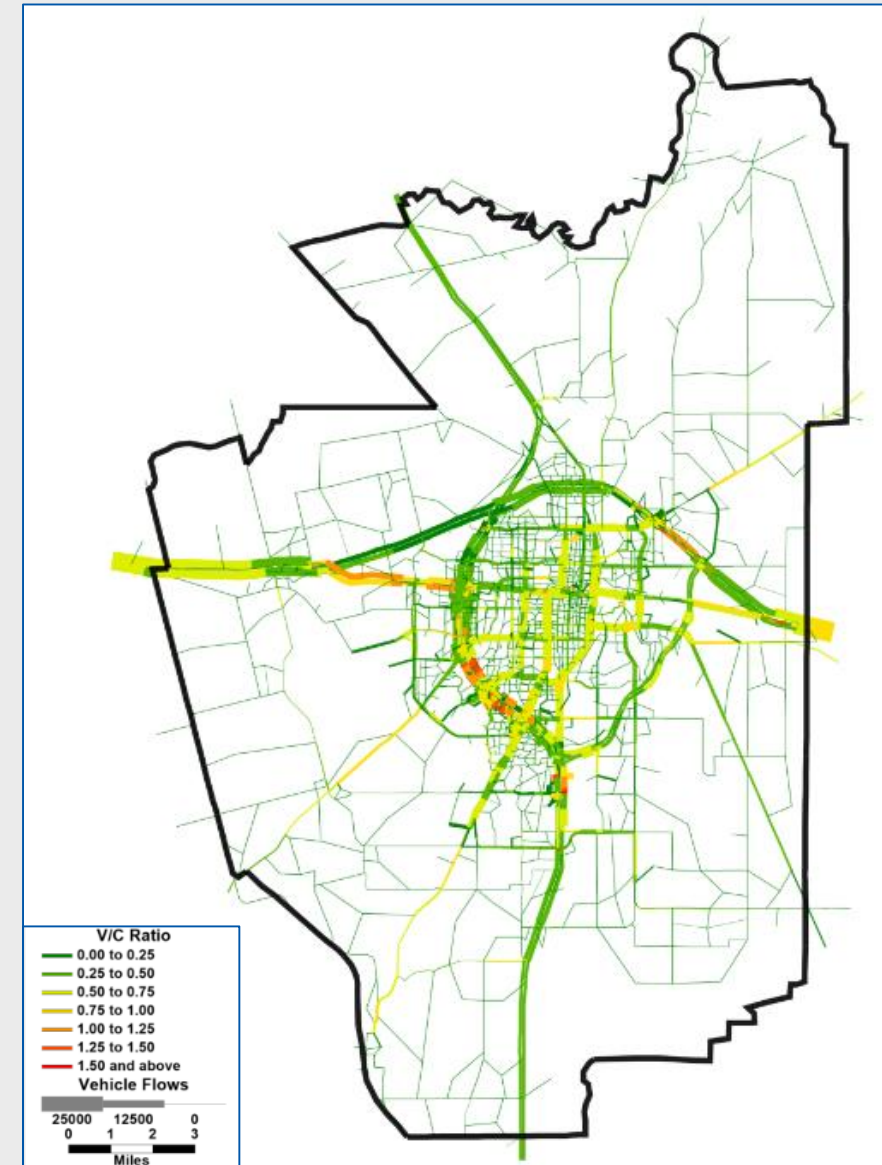
**52% Increase**



# Forecast Application Results

## 2050 Assignment Results


- Total Volume & Volume/Capacity



## Forecast Application Results

Statistic	2015	2050	Percent Growth
Population	133,720	159,514	19.3%
Households	49,197	59,955	21.9%
Employment	73,655	80,219	8.9%
Roadway (Centerline) Miles	679	689	1.5%
Roadway Lane Miles	1,520	1,636	7.6%
Trips	816,513	1,109,097	36%
Vehicle Miles of Travel	2,744,976	3,710,968	35%

# Model Interface

**ABILENE**  
METROPOLITAN PLANNING ORGANIZATION

Model About Utilities

Scenarios

2020

2045

2050

Model Type: Daily









Setup

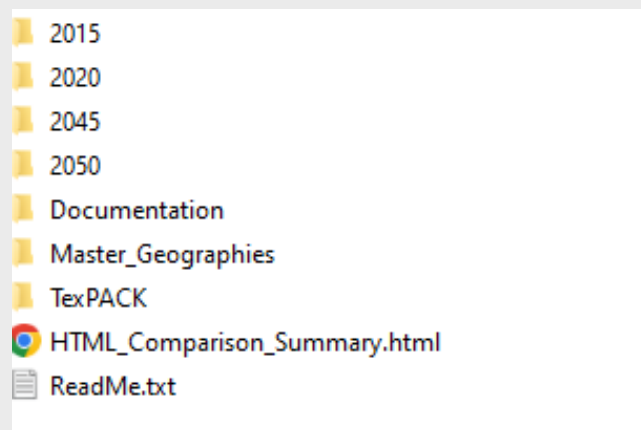
Run

☐ Single Stage

☐ All Stages (Click Initialization to Start)

Stages

	Initialization	
	Trip Generation	View
	Highway Skim	
	Trip Distribution	View
	Auto Occupancy	View
	Traffic Assignment	View



HTML\_Comparison\_Summary.html

## Next Steps?

---

- **MPO Apply Model in MTP/TIP Development**
- **MPO Maintain List of Projects**
  - Document Capacity Projects as they Open to Traffic
  - Document Details of New Funded Projects
- **TPP/MPO Develop Timeline for Next Model Update**
  - New travel survey data (2022-2024)
  - New traffic counts (Early 2025)
  - MTP due dates (December 2024 and 2029)
- **MPO Staff Train on Use and Application of Model.**

# Model Operational Support

---

- **Modeling Technical Assistance**
  - Email: [TPP-TRANSCAD-HELPDESK@txdot.gov](mailto:TPP-TRANSCAD-HELPDESK@txdot.gov)
- **Abilene Model Manager - Geena Maskey  
(Statewide Model Program Manager)**
  - Telephone: (512) 897-0674
  - Email: [Geena.Maskey@txdot.gov](mailto:Geena.Maskey@txdot.gov)
- **TDM Program Manager - Tammye Fontenot**
  - Telephone: (512) 871-8938
  - Email: [Tammye.Fontenot@txdot.gov](mailto:Tammye.Fontenot@txdot.gov)



August 20, 2024

# Questions



HELP

# #EndTheStreakTX

End the streak of daily deaths on Texas roadways.

TxDOT.gov (Keyword: #EndTheStreakTX)



#EndTheStreakTX Toolkit



Thank you



August 20, 2024

# TxDOT Project Management

*Presentation by:*  
*Michael Haithcock- TxDOT*



August 20, 2024

# TxDOT Project Management

The Abilene MPO Workshop

# MPO Projects use Federal Funding and Federal Law

MPO PROJECTS ADDRESS:

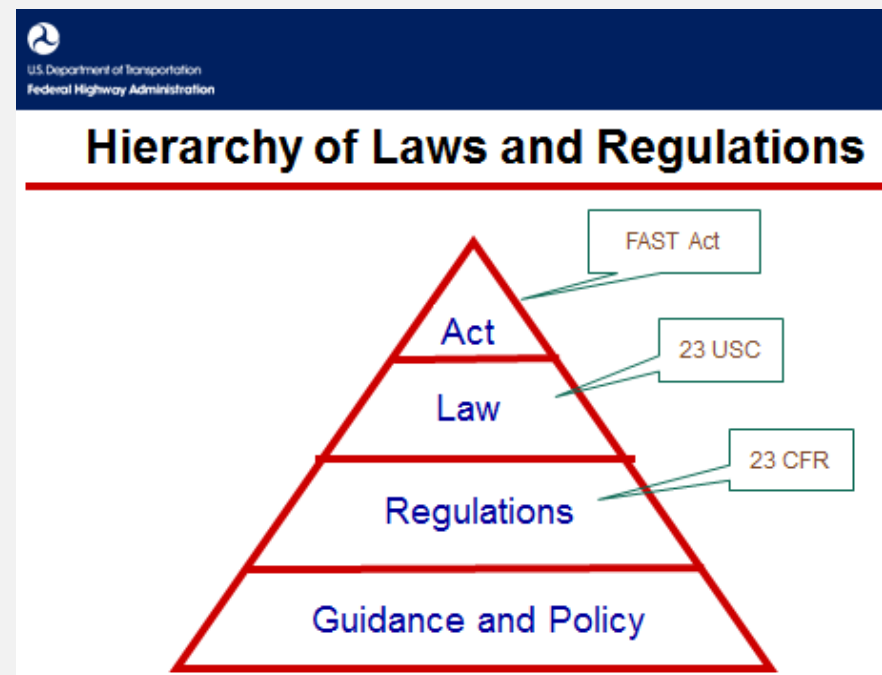
SAFETY                      SAFE AND EFFICIENT TRAFFIC MOVEMENT  
CONGESTION              INCREASING TRAFFIC VOLUMES  
CONNECTIVITY            WIDENING AND RELOCATION OF ROADWAYS

PROJECT MANAGEMENT

COMPLEX ENVIRONMENTAL DOCUMENTS

RIGHT OF WAY ACQUISITION

UTILITY RELOCATION



# MPO Project Management Process

0. Needs Identification
1. Project Selection
2. Consultant Selection
3. Concept Stage
4. Environmental Process
5. Preliminary Design
6. Preliminary Plan Review
7. Create Right of Way Plans
8. Acquire Right of Way
9. Final Plan Review
10. Relocate Utilities
11. Let Project to Construction
12. Construction

## **Needs Identification / Project Selection**

Once a project is suggested, research should be conducted to prioritize the need for one project relative to others competing for limited funds.

Many factors are considered in determining project need such as traffic analysis, pavement conditions, crash frequency, geometric standards, local government proposals, and statewide goals and objectives.


Needs Identification include the site visit with the Design Team to properly assess project needs to adequately design the project.

All projects must be approved by the Texas Transportation Commission, either by inclusion in the Unified Transportation Program or through a project specific minute order, before beginning project development.



# Needs Identification/Project Selection

 TEXAS DEPARTMENT OF TRANSPORTATION



**US 83 CORRIDOR SAFETY STUDY**

Stakeholder Workshop



August 4, 2015



**MEMO**  
May 28, 2015

**To:** Stan Swiatek, P.E.  
Abilene District


**From:** Carol T. Rawson, P.E.  
Traffic Operations Division

**Subject:** US 83 Corridor Study


At the request of the Abilene District, the Traffic Operations Division (TRF), with assistance from the Design Division (DES) and Maintenance Division (MNT), performed a site investigation and corridor safety study of US 83 from one mile north of FM 707 to one mile south of the US 83/84 intersection in Taylor County. The following is a summary of our findings and recommendations.

**Existing Conditions**

The US 83 corridor study area is approximately 12 miles in length which includes a 1 1/2 mile urban section in the City of Abilene and 10 1/2 miles of rural section south of Abilene (See Figure 1 and Appendix A).

 TEXAS DEPARTMENT OF TRANSPORTATION

**Public Involvement Timeline**



**The Stakeholder Committee will review data, clarify issues and make recommendations, which will be presented to general public for input in three open houses/public meetings held in the evenings.**

*The environmental review, consultation, and other actions required by applicable Federal environmental laws for this project are being, or have been, carried-out by TxDOT pursuant to 23 U.S.C. 327 and a Memorandum of Understanding dated December 16, 2014, and executed by FHWA and TxDOT.*

Appendix B - US 83 / US 84 Corridor Crossover Analysis										
Crossover #	Location	West Access	East Access	Distance Between Crossovers South/North*	Southbound Deceleration Lane Length†	Northbound Deceleration Lane Length†	Crossover Sight Present	Crossover Comments	Appendix A Reference Sheet	Appendix B Reference Sheet
N-1	US 83 at US 84 intersection	Driveway	To Eastbound US 84	(N/A) / (N/A)	NO	NO	NO	Appears to have minimal operational use. Adds an additional conflict point to the "Y" intersection.	Sheet 4	Sheet 25
N-2	US 83 at US 84 intersection	Southbound US 84	Driveway (Business)	(N/A) / (N/A)	NO	NO	NO	Appears to have minimal to moderate operational use. Adds an additional conflict point to the "Y" intersection.	Sheet 4	Sheet 25
S-3a	US 83 at US 84 intersection	Southbound US 84	US 84 Overpass	(N/A) / (N/A)	NO	NO	NO	Serves NB US 84 to SB US 83.	Sheet 4	Sheet 25
S-3b	US 83 at US 84 intersection	US 84 Overpass	Northbound US 84 to US 84	(N/A) / (N/A)	NO	NO	NO	Serves NB US 84 to SB US 83.	Sheet 4	Sheet 25
G-1	3000 N of US 83 at US 84 intersection	Driveway	N/A	1000 ft / 2000 ft	NO	NO	YES	Minimum desired crossover spacing not met.	Sheet 5	Sheet 26
G-2	2000 N of CR 134	Driveway	N/A	2000 ft / 2000 ft	NO	NO	YES		Sheet 5	Sheet 26
G-3	CR 134 intersection	CR 134	CR 134	2000 ft / 1400 ft	YES (347)	YES (247)	YES	Deceleration lane lengths do not meet minimum 30 design criteria.	Sheet 5	Sheet 26
G-4	1400 N of CR 134	N/A	N/A	1400 ft / 1000 ft	NO	NO	YES		Sheet 5	Sheet 27
G-5	1000 N of CR 134	Driveway	N/A	1000 ft / 1000 ft	NO	NO	YES		Sheet 5	Sheet 27
G-6	1000 S of CR 130	N/A	Driveway	1000 ft / 1000 ft	NO	NO	YES		Sheet 5	Sheet 28
G-7	CR 130 intersection	CR 130	CR 130	3800 ft / 2200 ft	YES (207)	YES (247)	YES	Deceleration lane lengths do not meet minimum 30 design criteria.	Sheet 5	Sheet 28
G-8	2200 N of CR 130	Driveway	CR 676	2200 ft / 1000 ft	NO	NO	YES		Sheet 5	Sheet 29
G-9	800 N of Divide Ave	Driveway	Driveway	1700 ft / 1000 ft	NO	NO	YES		Sheet 5	Sheet 29
G-10	800 S of Divide Ave	N/A	N/A	1470 ft / 800 ft	NO	NO	YES	Minimum desired crossover spacing not met.	Sheet 5	Sheet 29
G-11	Divide Ave intersection	Divide Ave	Driveway	600 ft / 100 ft	YES (347)	NO	YES	Deceleration lane length does not meet minimum 30 design criteria.	Sheet 5	Sheet 30
G-12	550 N of Divide Ave	N/A	N/A	550 ft / 1000 ft	NO	NO	YES	Minimum desired crossover spacing not met.	Sheet 5	Sheet 30
G-13	820 N of CR 148	Driveway (Business)	N/A	1840 ft / 141 ft	NO	NO	YES	Minimum desired crossover spacing not met. Sight distance concerns due to vertical curve on NB US 83 / US 84.	Sheet 5	Sheet 31
C-14	575 N of CR 149	N/A	N/A	340 ft / 575 ft	NO	NO	YES	Minimum desired crossover spacing not met. Sight distance concerns due to vertical curve on NB US 83 / US 84.	Sheet 5	Sheet 31
C-15	CR 149 intersection	CR 149	Road (Roadside Park)	575 ft / 1000 ft	YES (247)	YES (247)	YES	Minimum desired crossover spacing not met. Deceleration lane length does not meet minimum 30 design criteria. Sight distance concerns due to vertical curve on NB US 83 / US 84.	Sheet 5	Sheet 32
G-16	1300 N of CR 149	N/A	Driveway	1300 ft / 1700 ft	NO	NO	YES		Sheet 5	Sheet 32
G-17	1000 N of CR 148	N/A	Driveway	1700 ft / 2000 ft	NO	NO	YES		Sheet 5	Sheet 32
G-18	4500 N of Africa Run Dr	N/A	N/A	2000 ft / 1540 ft	NO	NO	YES		Sheet 5	Sheet 33
G-19	1700 N of Africa Run Dr	N/A	N/A	1340 ft / 1700 ft	NO	NO	YES		Sheet 5	Sheet 33
G-20	500 N of Africa Run Dr	Driveway (Business)	N/A	1700 ft / 1000 ft	NO	NO	YES		Sheet 5	Sheet 33

## **2. Consultant Selection, Negotiation, Contract, Kickoff      6-12 months**

- a. Scope the Project
  - 1. TxDOT scopes project with our staff before advertisement
  - 2. Consultant Services approximately 10% of Construction Cost
- b. Advertise the Project
  - 1. Four PEPS procurement advertisements every year
  - 2. TxDOT spends \$1.5 Billion / Year on consultant services
  - 3. Over 1000 TxDOT projects to TxDOT consultants every year
- c. Evaluate the Statement of Qualifications
  - 1. The Brooks Act (Federal Law)
  - 2. Many engineering firms will submit SOQs to be evaluated
- d. Negotiate a Contract and Kickoff
  - 1. Consultants have to negotiate with subs
  - 2. Contract Routing and Signatures

### **3. Concept Stage**

**6-12 months**

- a. Survey and Mapping
- b. Traffic Projections
- c. Proposed Typical Section and Pavement Design
- d. Create Construction Limits and Proposed Right of Way
- e. Examine Utility Relocations
- f. Project Layout
- g. Preliminary Cost Estimate

## **4. Environmental Process**

**18-24 months**

- a. Public Information Meeting / Public Hearing
- b. Endangered Species
- c. History and Archeology
- d. Public Land and Environmental Justice

## **5. Preliminary Design**

- a. Plans, Profiles, and Cross Sections
- b. Quantities and Bid Items
- c. Coordinate with Utilities and Railroad
- d. Coordination with Federal Highway Administration

## **6. Preliminary Plan Review**

## **7. Create Right of Way Plans**

**3-6 months**

- a. Environmental Document must be signed
- b. Constant Revisions during the Design Process

## **8. Acquire Right of Way**

**12-24 months**

- a. Consultant Selection
- b. Appraisals
- c. Negotiation
- d. Appeals

## **9. Final Plan Review**

**10. Relocate Utilities 6-8 months**

**11. Let Project to Construction**

**12. Construction 18-36 months**



## MPO Project Management Process

Consultant Selection	6 – 12 months
Concept Stage	6 – 12 months
Environmental Process	8 – 24 months
Preliminary Design	
Create Right of Way Plans	4 – 6 months
Acquire Right of Way	12 – 24 months
Final Plan Review	
Relocate Utilities	6 – 8 months
Let Project to Construction	
Construction	18 – 24 months
<u>Total Project Development</u>	<u>60 - 110 months</u>

## **Most of the MPO Project Management Process**

The 60 – 110 months project schedule is a typical scenario

### Internal Risks

FHWA

Environmental

Right of Way

Utility Relocation

Unforeseen Obstacles

### External Risks

Funding

Human Resources

Politics

Unforeseen Obstacles

## The Good News

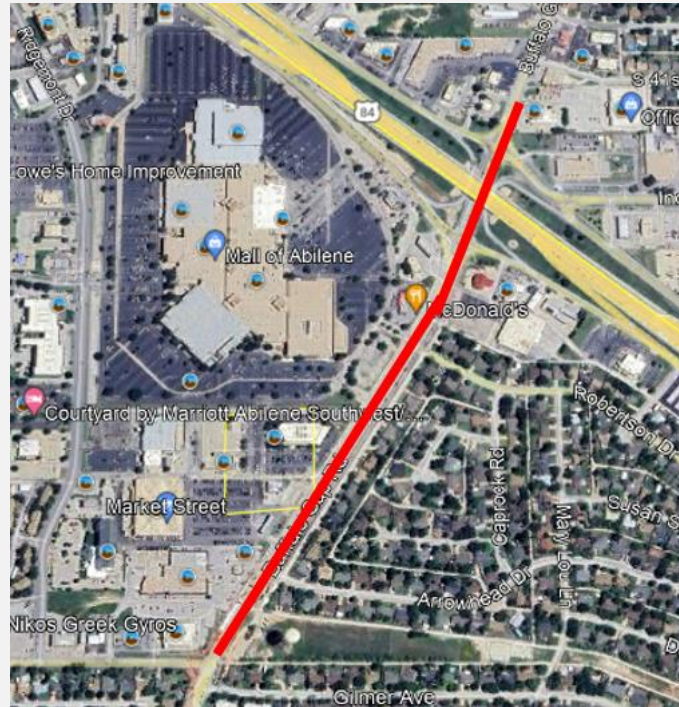
- 1) The best projects are usually chosen and eventually built for the MPO community.
- 2) Public participation, transparency, and documentation are clear and evident throughout the process.
- 3) The Federal Process is very slow, but very fair, and landowners are treated fairly and have due process and legal rights.
- 4) Once projects are completed, the public is usually highly complimentary of the final product.
- 5) Once completed, the projects usually stand the test of time for many years to come.

These are some MPO Projects currently under Construction



**CSJ 0699-01-051 (\$11,101, 328) & CSJ 0699-01-052 (\$12,643,226) - CAT 2 MPO  
FUNDING**

**FM 89 TAYLOR COUNTY - BUFFALO GAP ROAD**

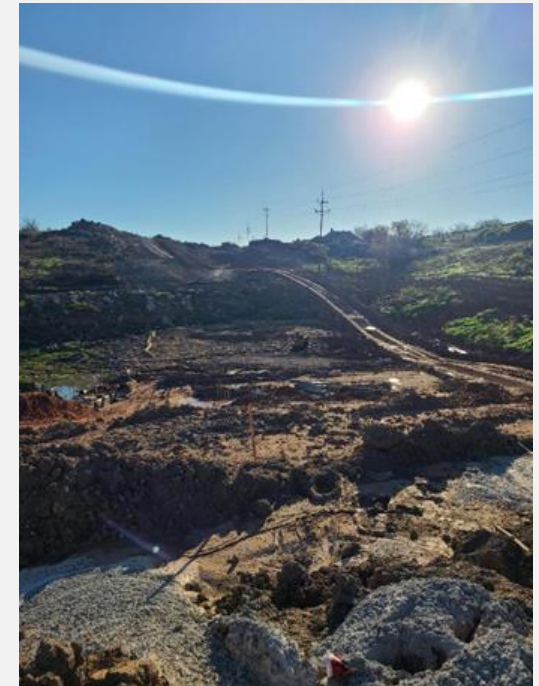
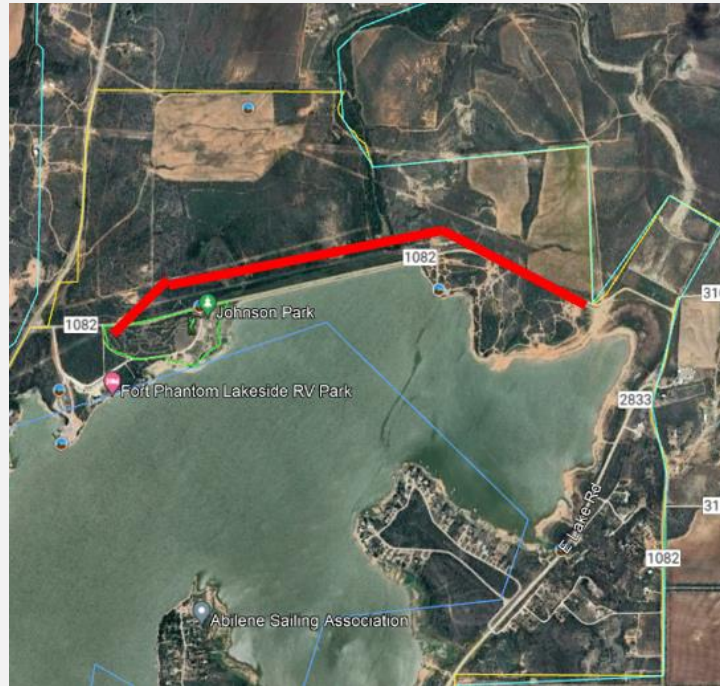






**CSJ 0972-03-021 (\$8,867,738) - CAT 2, CAT 3 & CAT 11 FUNDING**

**FM 1082 RELOCATE DAM ROAD – JONES COUNTY**

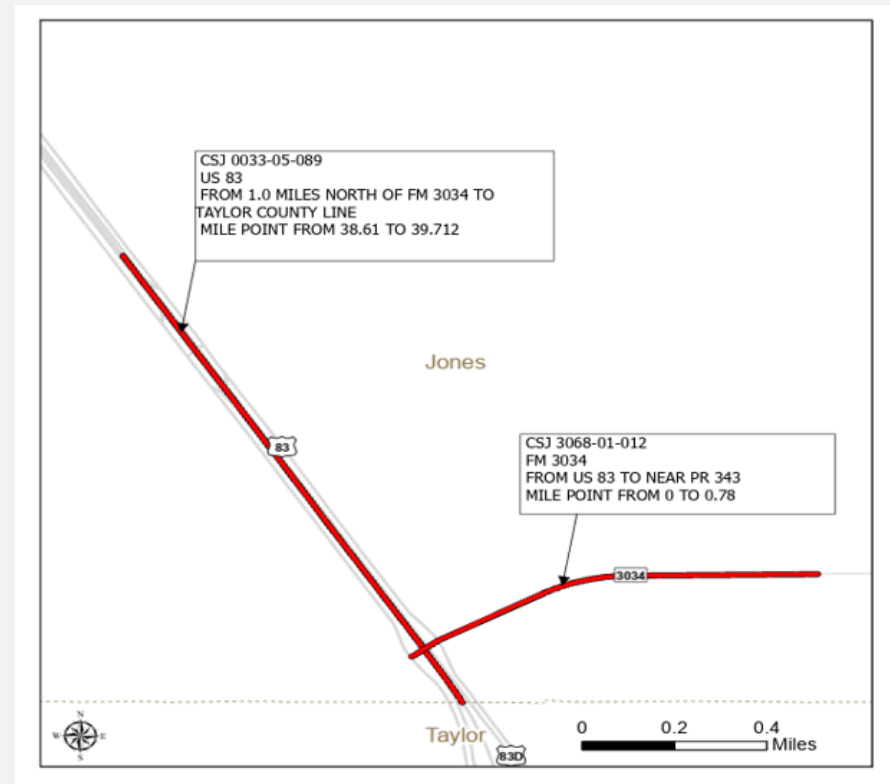






**CSJ 0033-05-089 & CSJ 3068-01-012 (\$39,500,000) - CAT 4U AND CAT 2 FUNDING**

**US 83 / FM 3034 INTERCHANGE – JONES COUNTY**





## Projects Currently in Project Development

MAP ID	CSJ	CCSJ	COUNTY	HWY	PROJECT DESCRIPTION	AVL DATE / LET DATE	CONSTRUCTION COST ESTIMATE	UTP ACTION	AUTHORIZED CONSTRUCTION FUNDING BY CATEGORY
1	0006-06-109	0006-06-109	Taylor	IH 20	IH 20 SIX LANES NEAR JUDGE ELY TO SH 351	6/1/2026	\$ 104,765,616.00	No Funding Change	Cat. 2 Metro/Urban Corridor \$20,000,000 Cat. 12 Strategic Priority \$84,765,616 TOTAL \$104,765,616
2	0699-01-067	0699-01-067	Taylor	FM 89	FM 89 ADD TURN LANES ELM CREEK TO FM 707	1/1/2027	\$ 5,400,000.00	New Authorization	Cat. 2 Metro/Urban Corridor \$5,400,000 TOTAL \$5,400,000
3	0033-08-045	0033-08-045	Taylor	BU 83D	BU 83 AT PINE STREET INTERSECTION UPGRADE	2/1/2027	\$ 5,600,000.00	New Authorization	Cat. 2 Metro/Urban Corridor \$5,600,000 TOTAL \$5,600,000
4	2398-01-062	2398-01-062	Taylor	SL 322	SL 322 & SH 36 INTERSECTION IMPROVEMENTS	4/1/2027	\$ 10,800,000.00	New Authorization	Cat. 2 Metro/Urban Corridor \$10,800,000 TOTAL \$10,800,000
5	0663-02-011	0663-02-011	Taylor	FM 707	FM 707 WIDEN US 83 TO FM 1750	6/1/2027	\$ 10,800,000.00	New Authorization	Cat. 2 Metro/Urban Corridor \$10,800,000 TOTAL \$10,800,000
6	0034-01-143	0034-01-143	Taylor	US 83	US 83 FR INDUSTRIAL TO FM 89	1/1/2028	\$ 5,600,000.00	New Authorization	Cat. 2 Metro/Urban Corridor \$5,600,000 TOTAL \$5,600,000
7	0663-01-024	0663-01-024	Taylor	FM 707	FM 707 FM 89 TO US 83	3/1/2028	\$ 14,493,440.00	No Funding Change	Cat. 2 Metro/Urban Corridor \$14,493,440 TOTAL \$14,493,440
8	0006-06-118	0006-06-118	Taylor	IH 20	IH 20 DIRECT CONNECTS AT SL322 (Needs to Let with Project #2)	3/1/2034	\$ 33,600,000.00	New Authorization	Cat. 2 Metro/Urban Corridor \$33,600,000 TOTAL \$33,600,000



August 20, 2024

# THANK YOU

Michael A. Haithcock, P.E.  
Director of TP&D Abilene

# FYs 2025-2050 Metropolitan Transportation Plan (MTP) and Project Discussion

*Presentation by:*  
*Bill Frawley – Huitt-Zollars, Inc.*

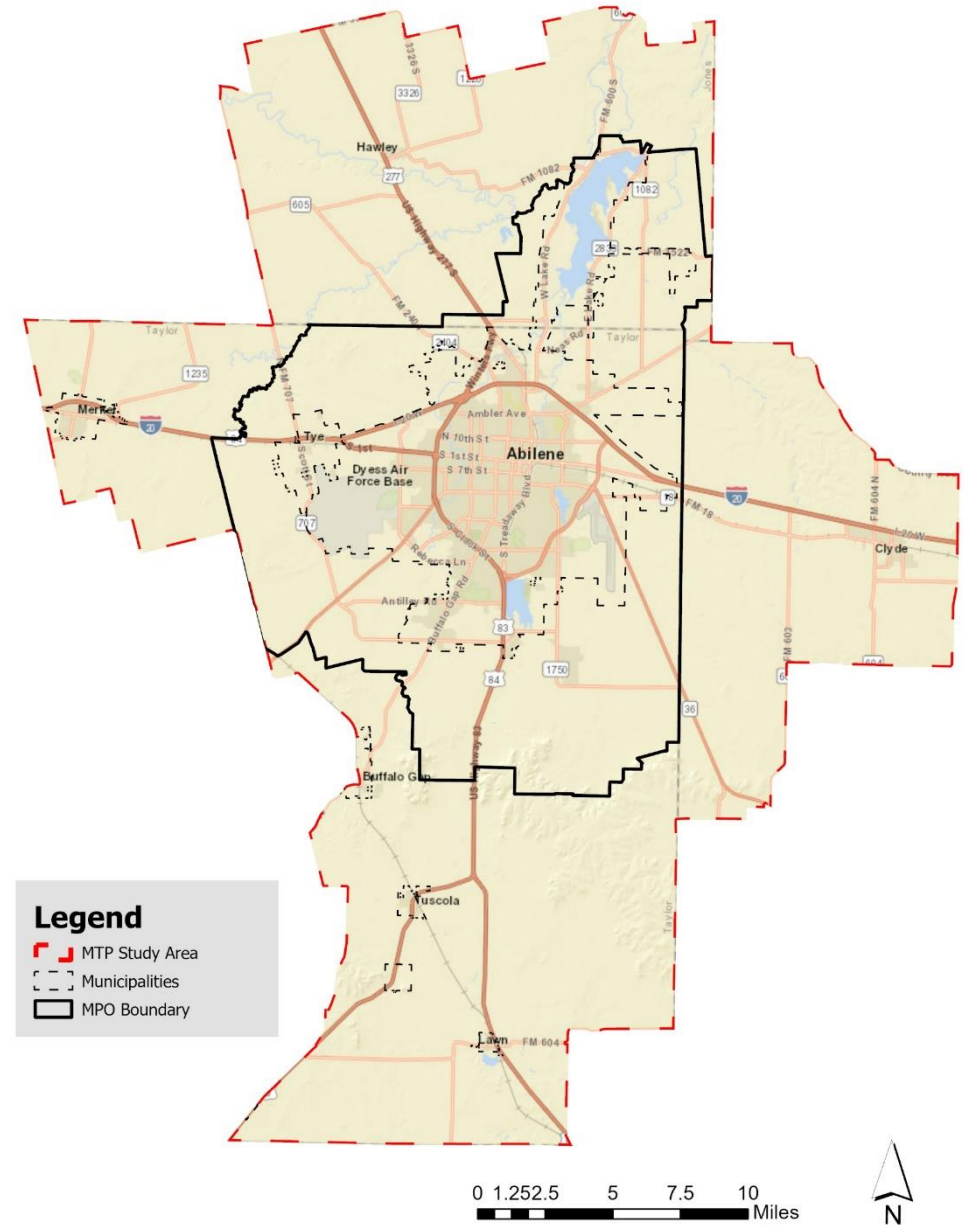
# Abilene 2050 MTP Update

TAC & Policy Board Meeting  
August 20th

# Abilene MPO

The Abilene Metropolitan Planning Organization (MPO) is the regional transportation planning agency responsible for working with local, state, and federal agencies along with many community partners, transportation providers, and citizens.

- MPO Boundary
- MTP Expanded Study Area

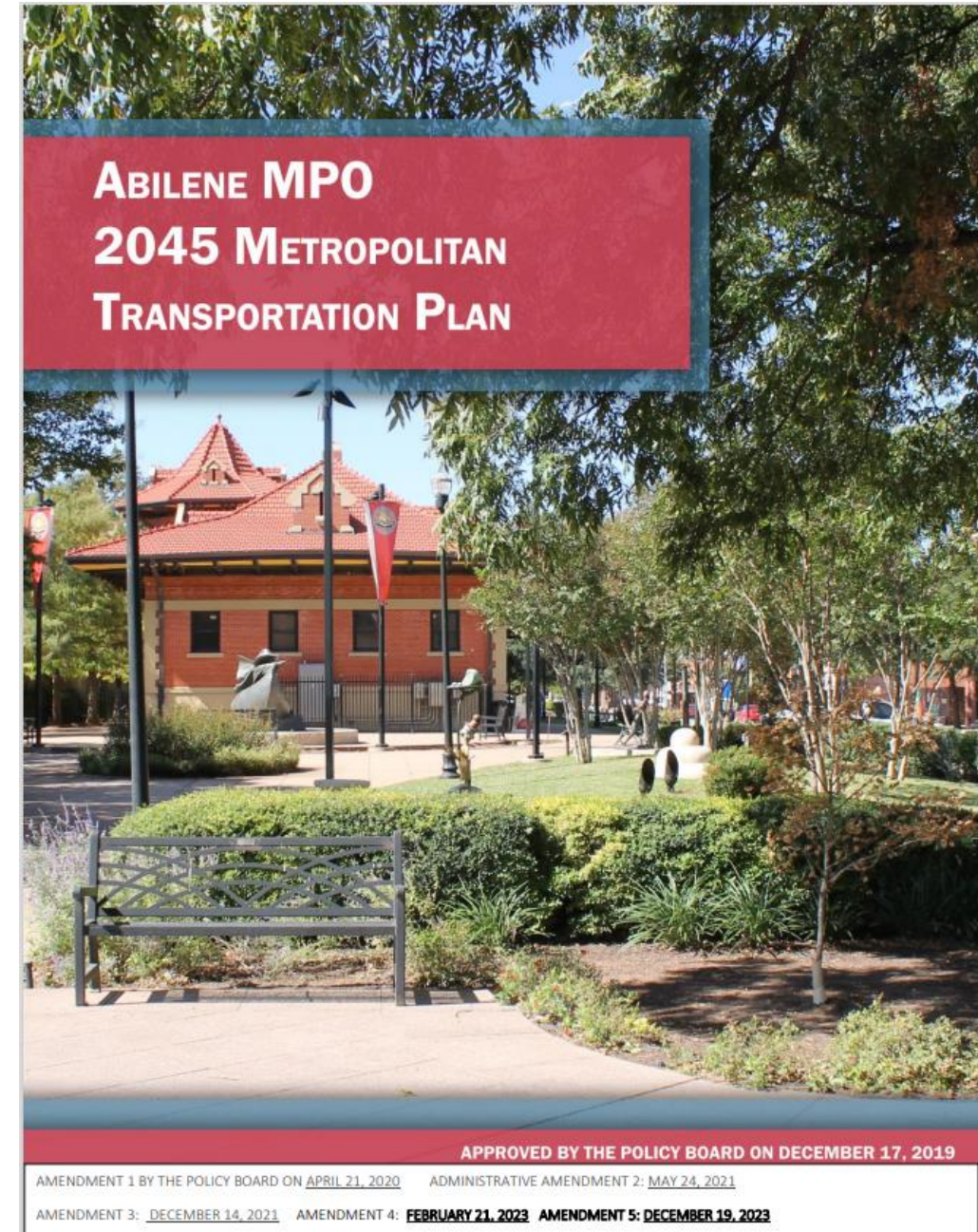




# 2050 Metropolitan Transportation Plan (MTP)

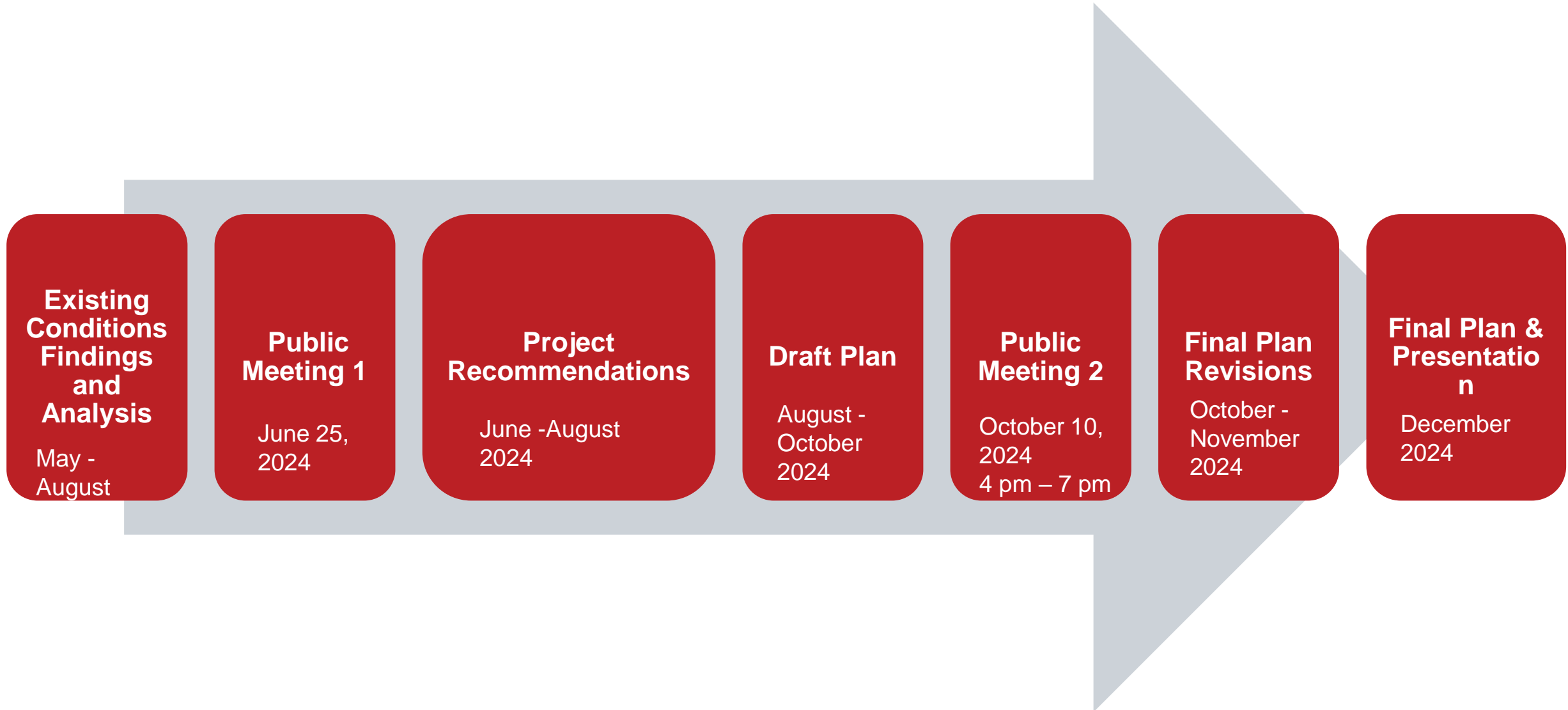
The MTP is a planning document updated every 5 years by the region's Metropolitan Planning Organization (MPO).

The document acts as a guide for the creation and development of transportation facilities and services over the next 25 years.





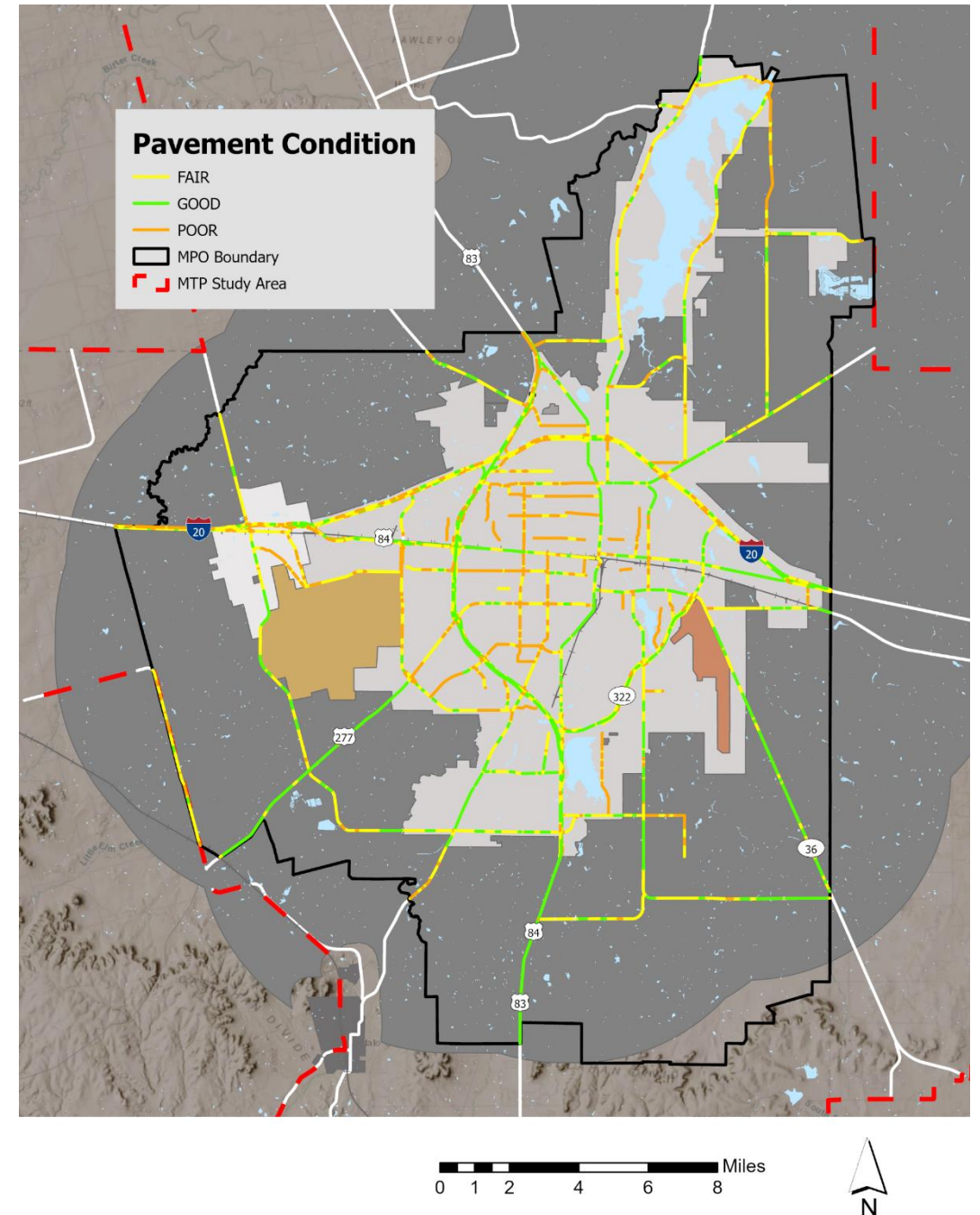
# 2050 MTP Update Process



# Existing Conditions

## Pavement Condition

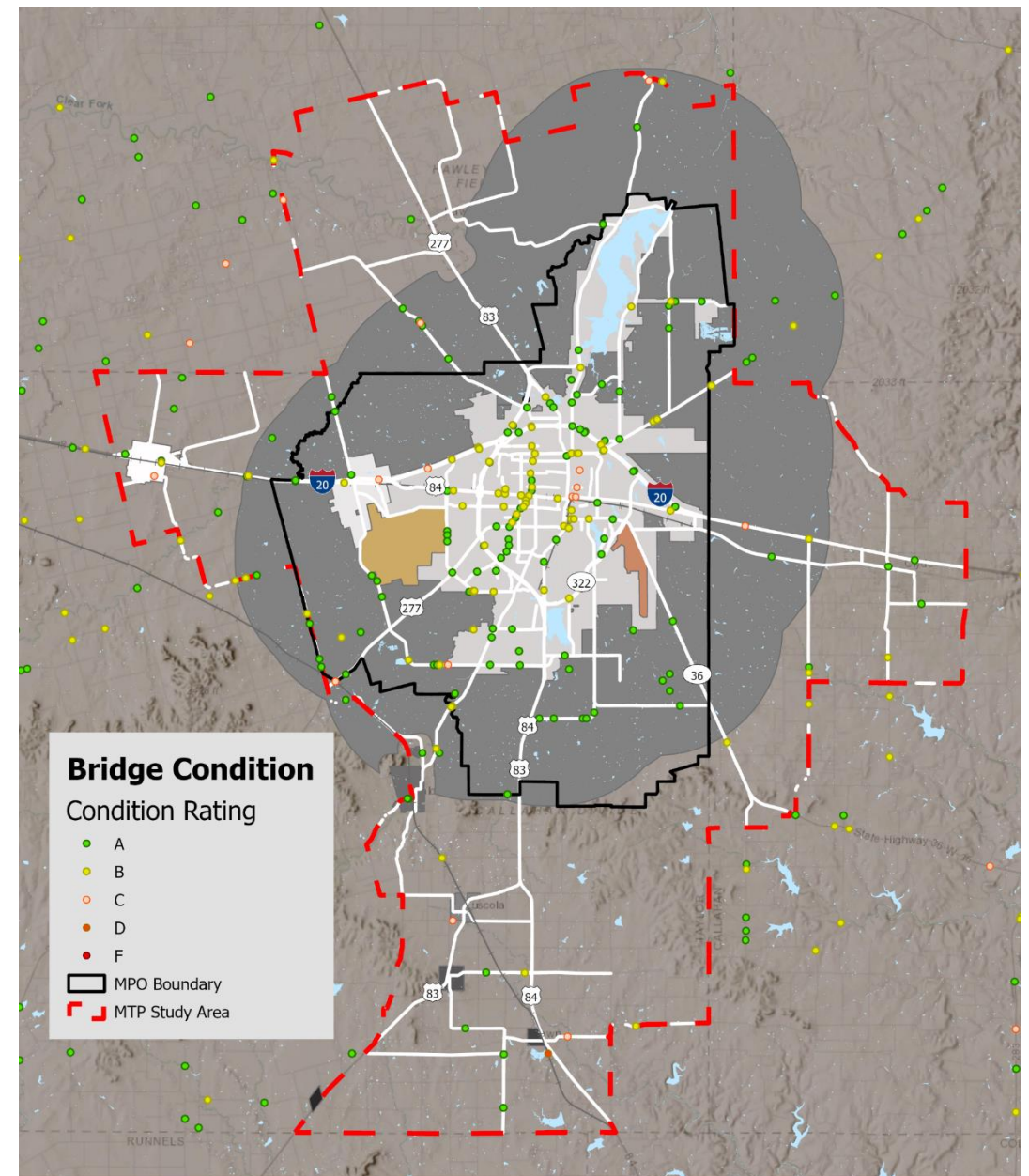
- Data Indicates Quality Decrease Since 2017
- Lower Quality Pavement in Abilene's Urban Core



# Existing Conditions

## Bridge Condition

- Assessment of Overall Bridge Health
- 1 Poor-Quality (D Rating) Bridge in the MTP Study Area



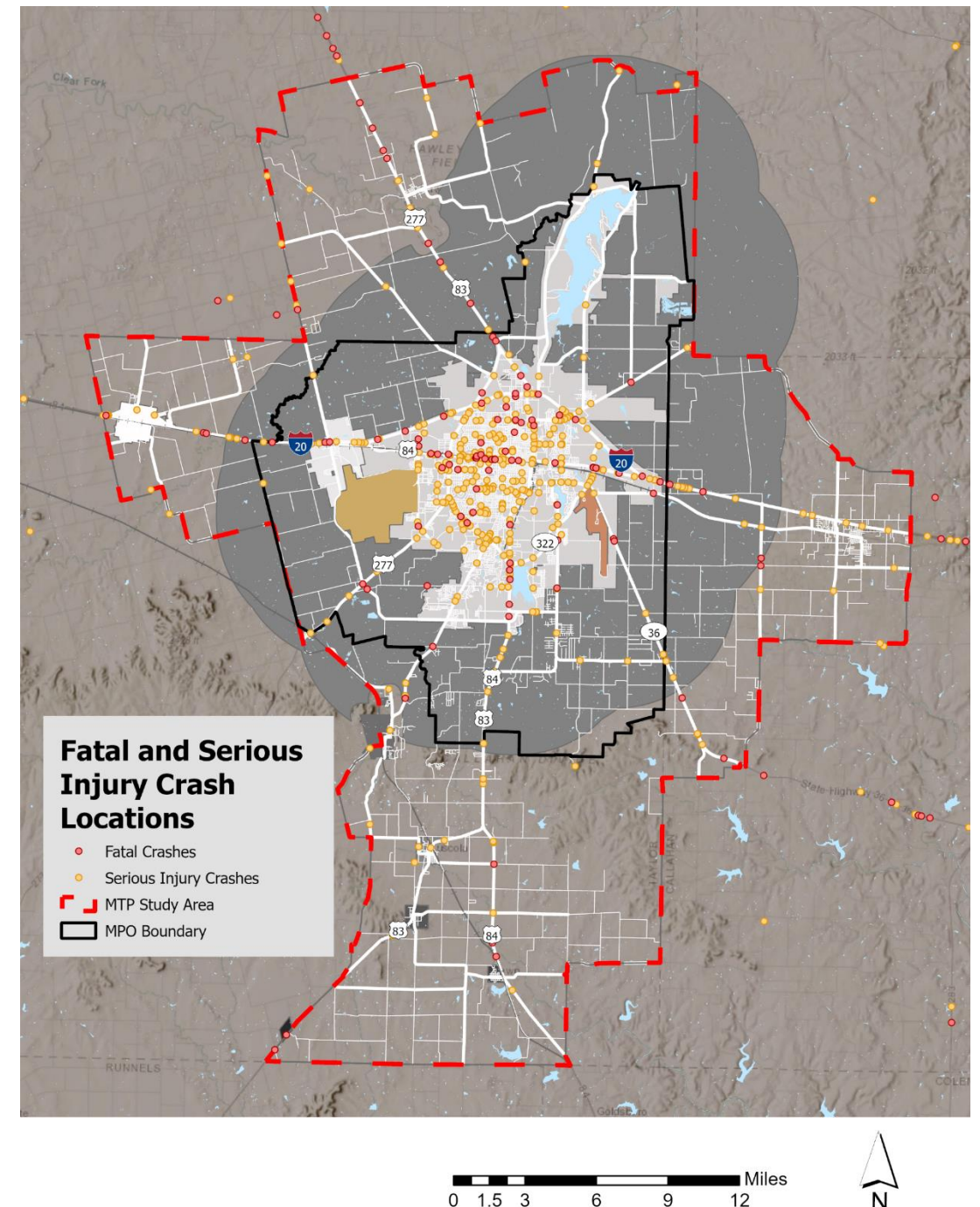


# Existing Conditions

## Fatal and Serious Injury Crashes

- 2019-2023:
  - 101 Fatal Crashes in MTP Study Area
  - 435 Serious Injuries Crashes in MTP Study Area

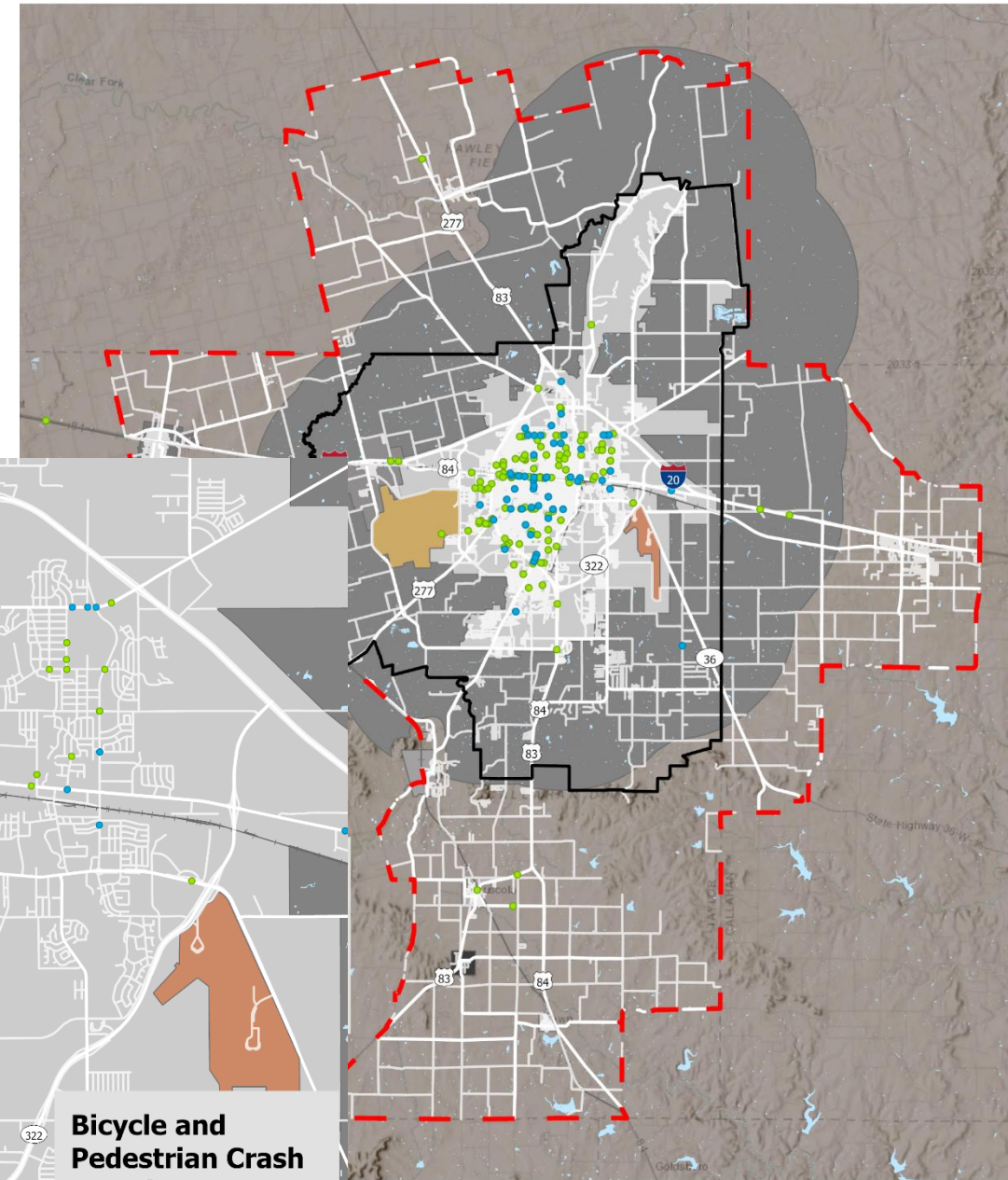
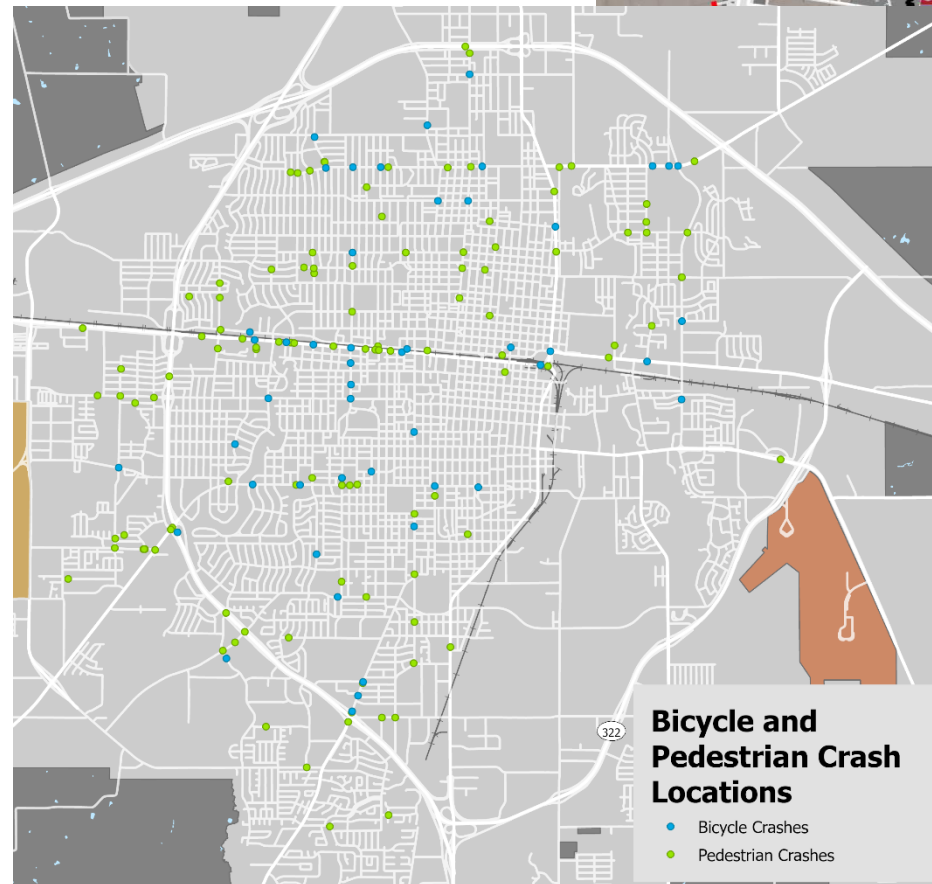
Distributed throughout urban core area



# Existing Conditions

## Bicycle and Pedestrian Crashes

- 2019-2023:
  - 52 Bicycle Crashes in MTP Study Area
  - 133 Pedestrian Crashes in MTP Study Area

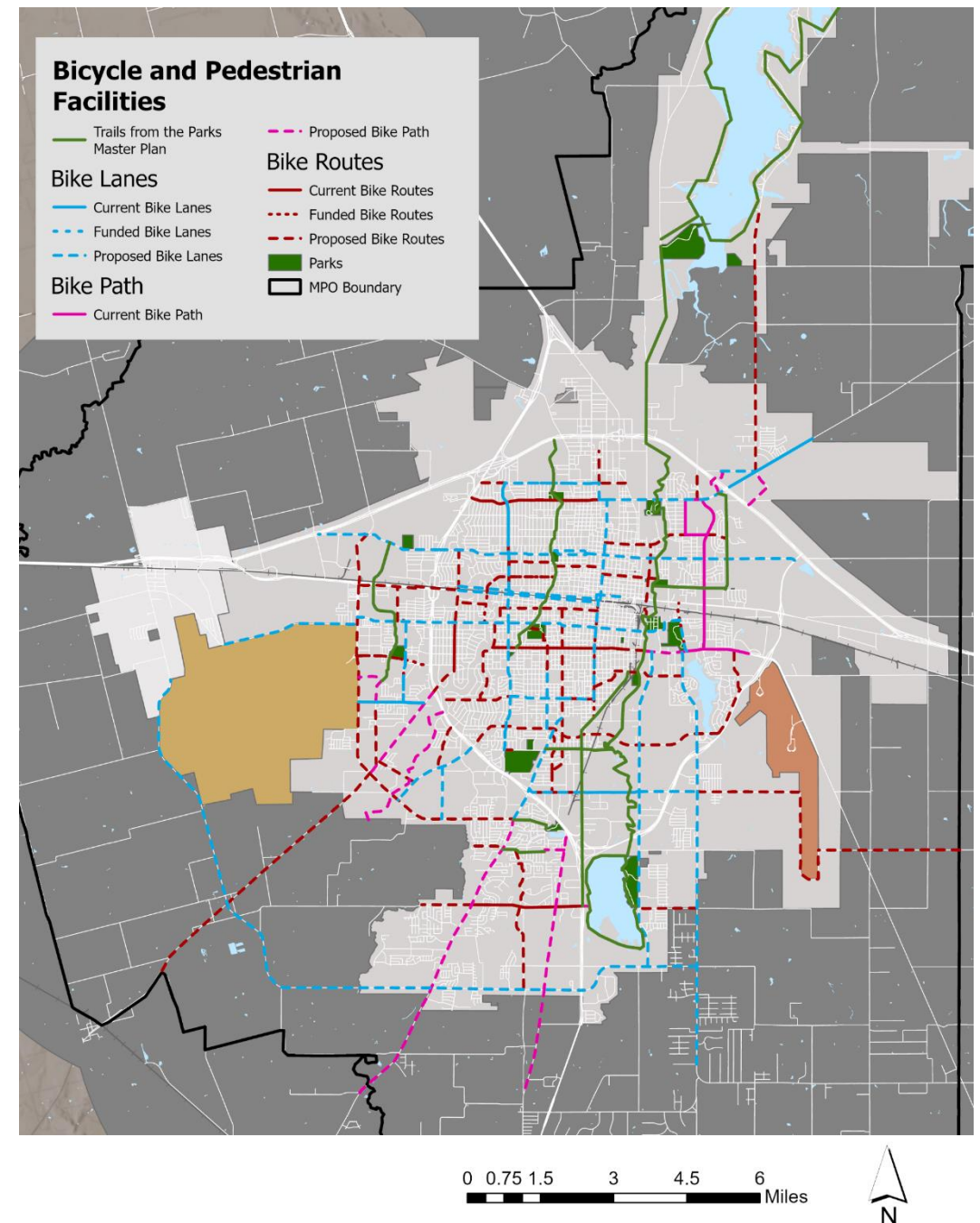




# Existing Conditions

## Bicycle and Pedestrian Facilities

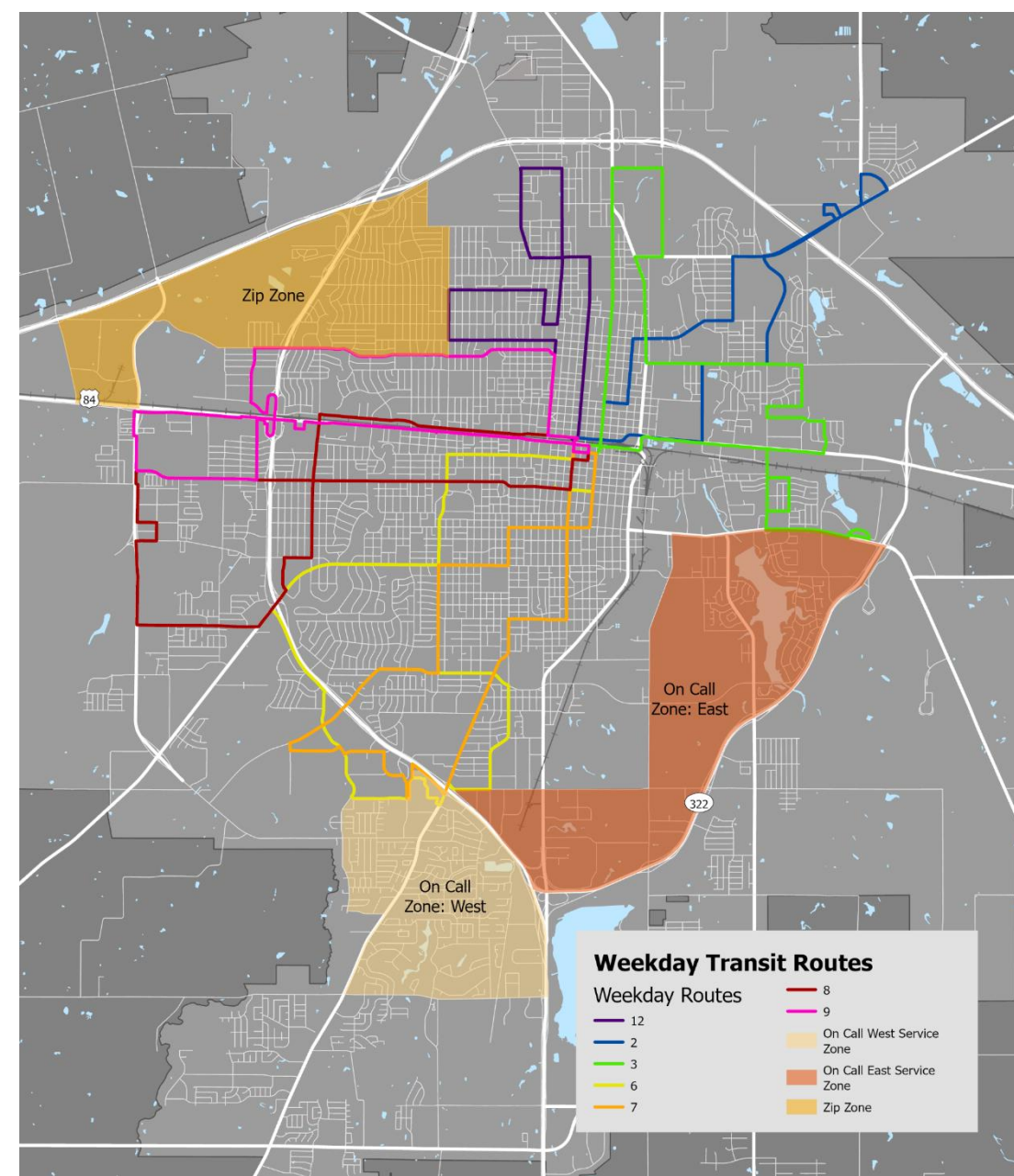
- Based on the 2015 City of Abilene Bicycle Plan
- Updated up to 2022



# Existing Conditions

## Transit

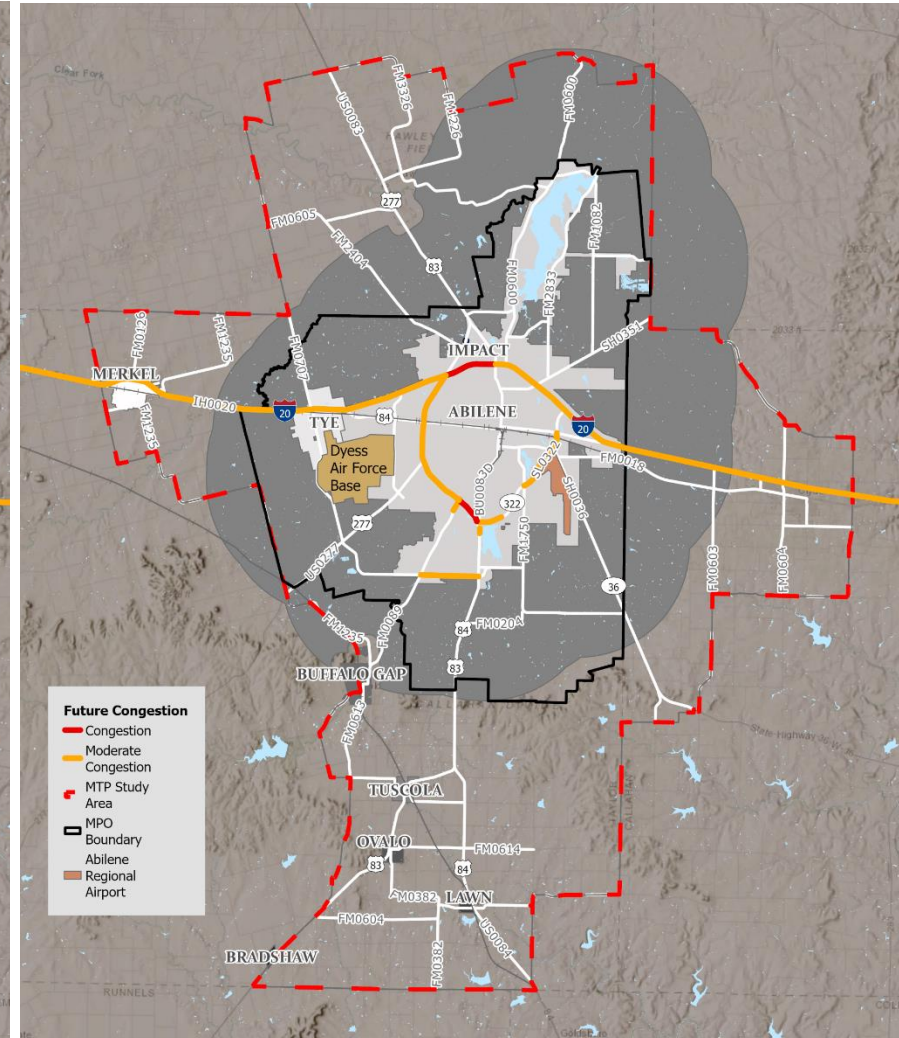
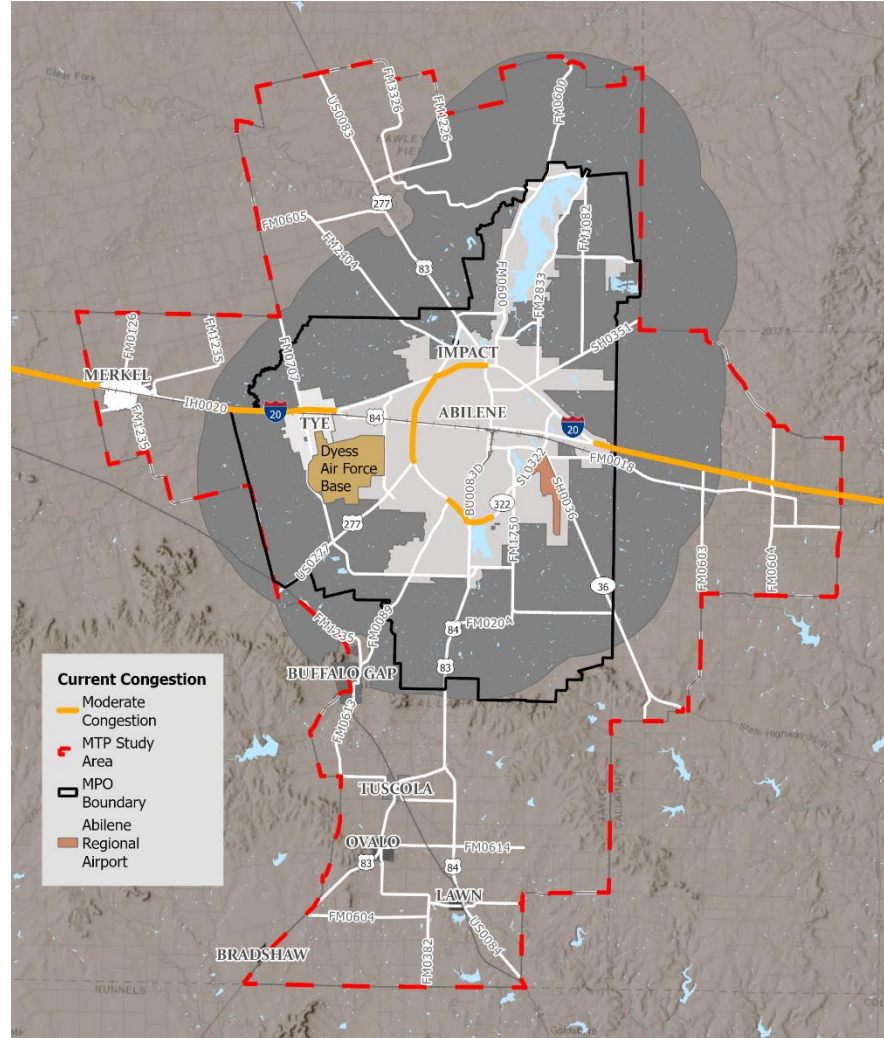
- City Link Services:
  - Fixed-Route Buses
  - ADA Paratransit Van Services
  - Charter Services
  - Evening Curb-to-Curb Pickups & Drop-offs
  - South Abilene On-Call Services
  - Northwest Abilene's ZipZone On-Demand Public Rideshare
- Limited Weekend Service on Saturdays





# Congestion

- Potential Inaccuracies

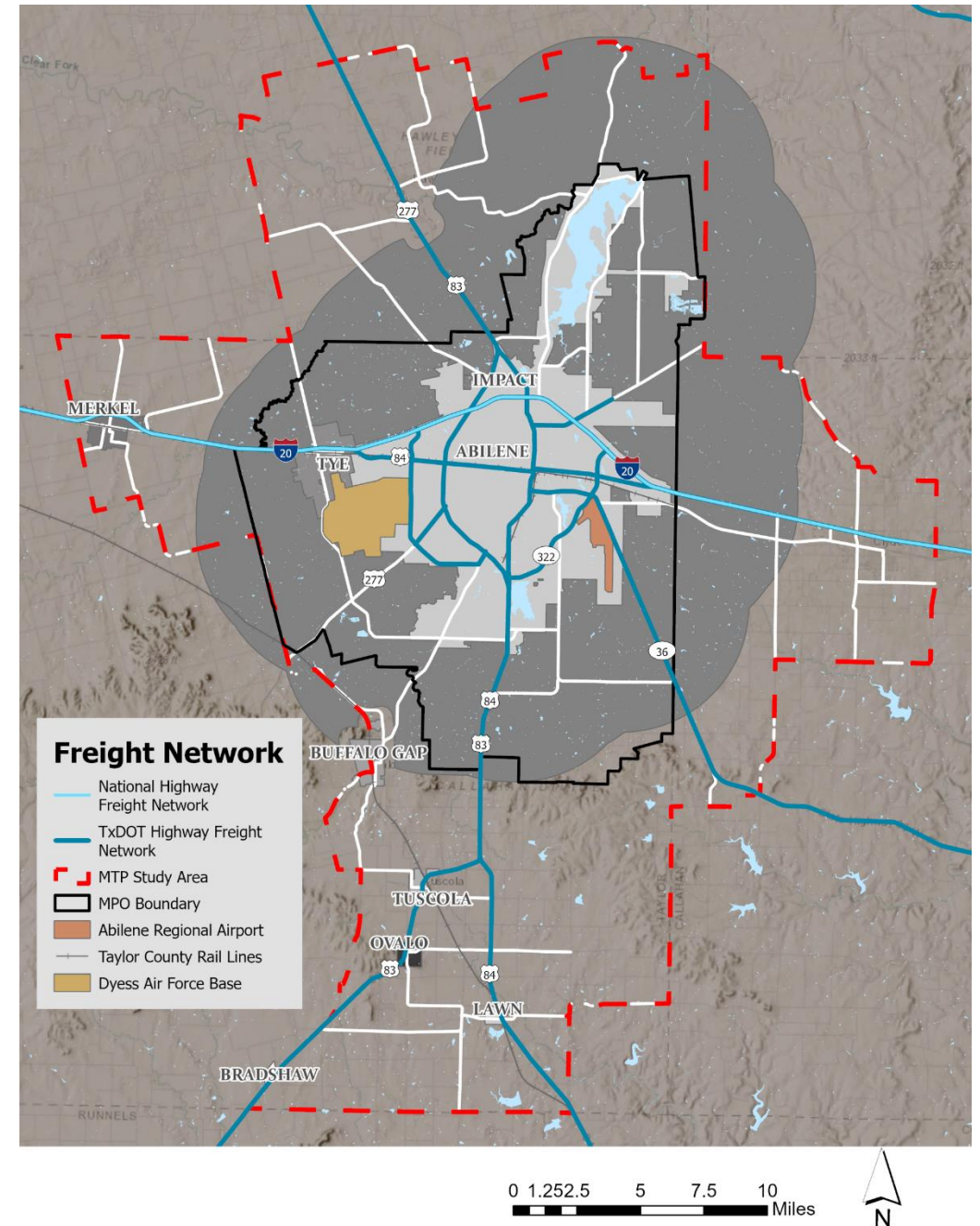


# Existing Conditions

## Freight

Major freight corridors are obvious

- Multiple major roads bring freight into, from, and through the Abilene area
- IH 20 is planned for improvements
- Some arterial streets carry local freight traffic
- Some projects may need to include geometric and clearance aspects
- No truck route ordinances found





# Existing Conditions

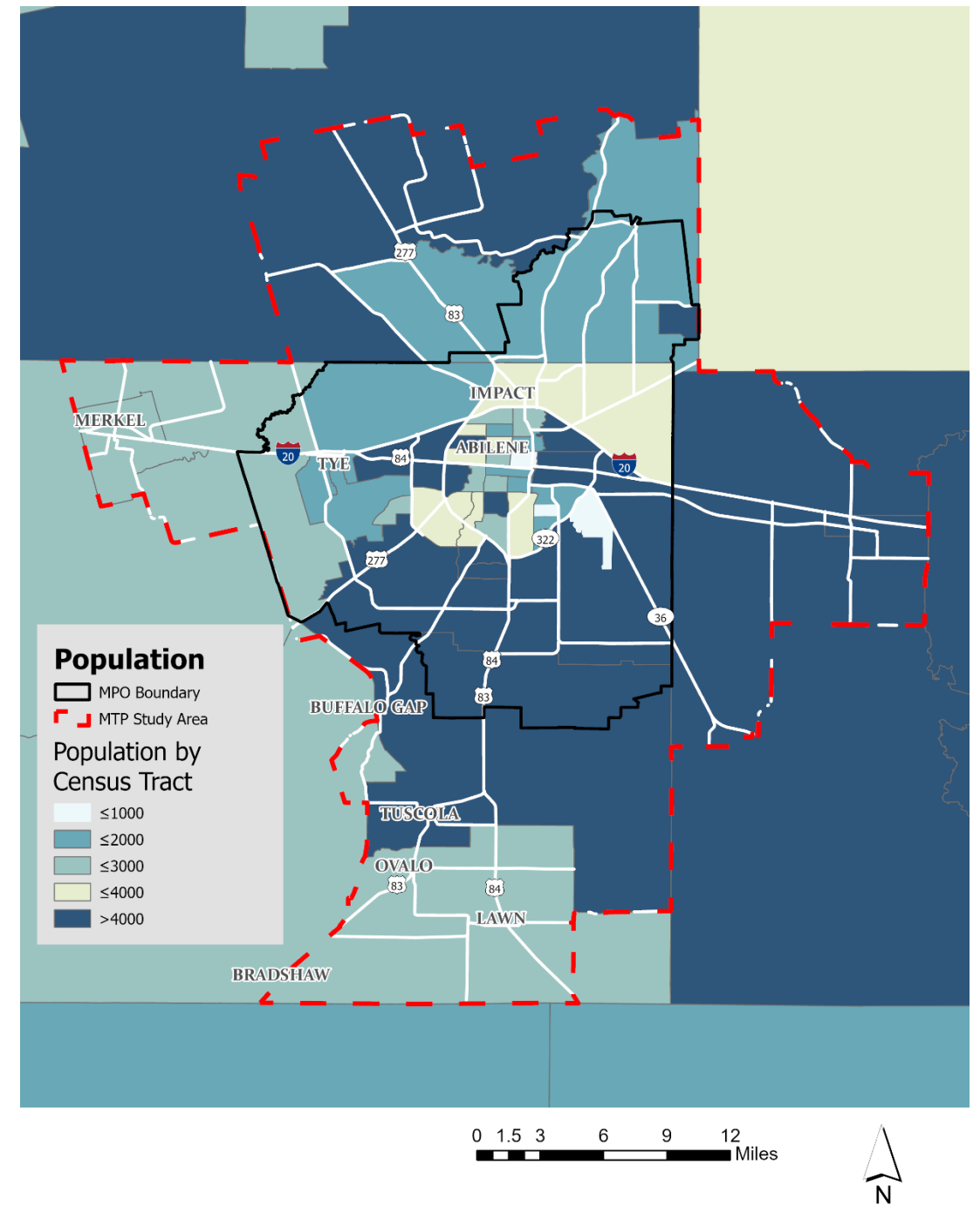
## Population

Most growth to the southern areas

- Typical lot sizes
- Smaller lots
- Low density

Some growth in northeast/ACU areas

- Single family
- Apartments

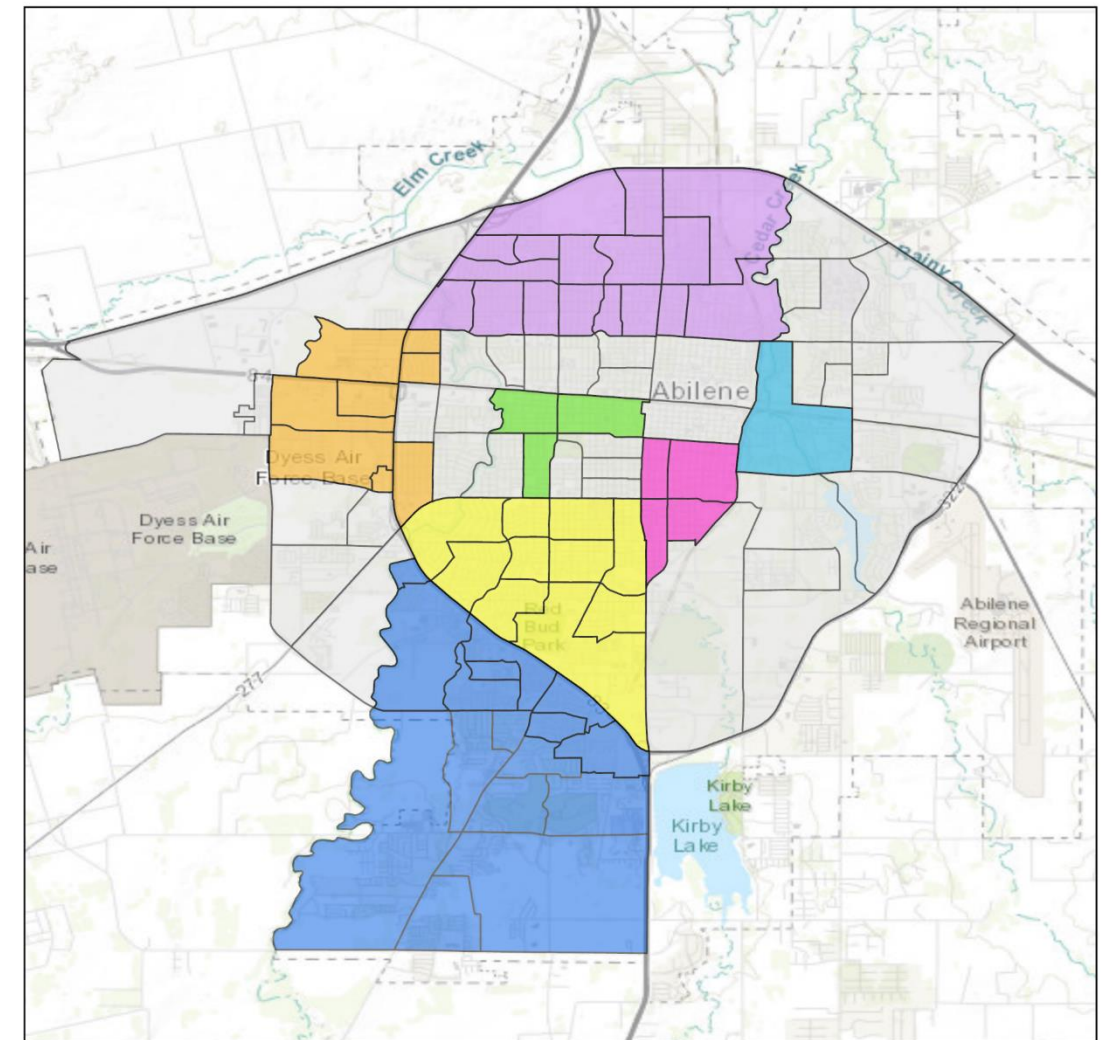


# Existing Conditions

## Vulnerable Populations

### Title VI / Environmental Justice Considerations

- Used NEPAassist and STEAP tools to analyze
- Minority populations
  - Some concentrations
  - Live throughout the “urban core”
- No or low automobile ownership
  - Some concentrations
  - Indicate where bike/ped and transit are most important



#### EJ Study Zones

Area 1	Area 5
Area 2	Area 6
Area 3	Area 7
Area 4	Urban Core

# Public Involvement

## Delphi Panel

Delphi Group workshop was extremely insightful

- Approximately 40 participants
- Wide variety of entities and interests participated

Safety was emphasized

- Bicycle/pedestrian
- Railroad crossings blocked in small towns
- Rural roads are carrying increasing volumes of urban type traffic
  - Need widening and turn lanes

# Public Involvement

## Delphi Panel

### Growth

- Residential
  - South
  - Northeast
- Industrial
  - Northwest
- Rural roads are carrying increasing volumes of urban type traffic
  - Need widening and turn lanes

Dyess AFB needs transportation for those without vehicles

# Public Involvement

## Delphi Panel

### Tourism

- Needs to be included/coordinated (federal guidance)
- Various types in Abilene area
  - Recreational
  - Sports
  - Medical
  - Shopping

### Resilience

- Some corridors have better alternate routes than others



# Public Involvement

## Public Meeting 1

- Limited public meeting attendance
  - Bicycle / pedestrian safety and access
    - Multiple areas and purposes
  - Transit issues discussed
  - Safety emphasized

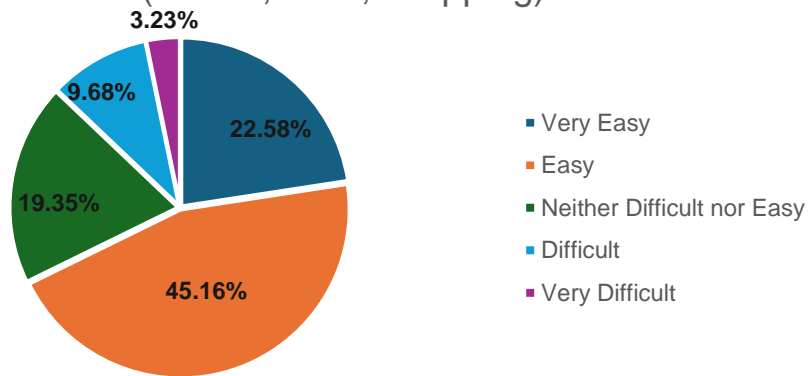


# Public Involvement Survey

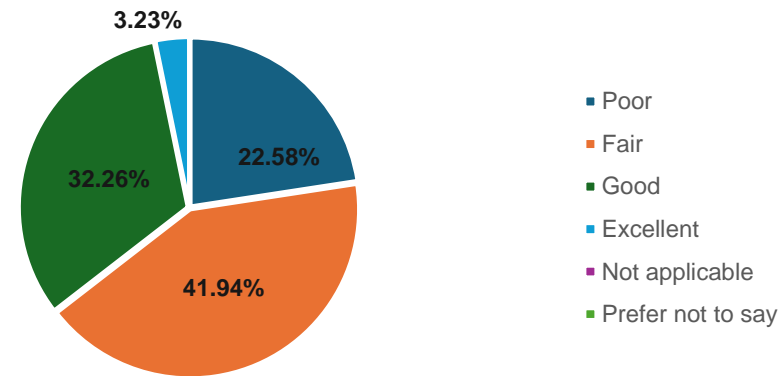
June 7<sup>th</sup>, 2024 - August 5<sup>th</sup>, 2024

33 Responses

From where you live, how difficult/easy is it for you to get to the places you want to go (school, work, shopping)?

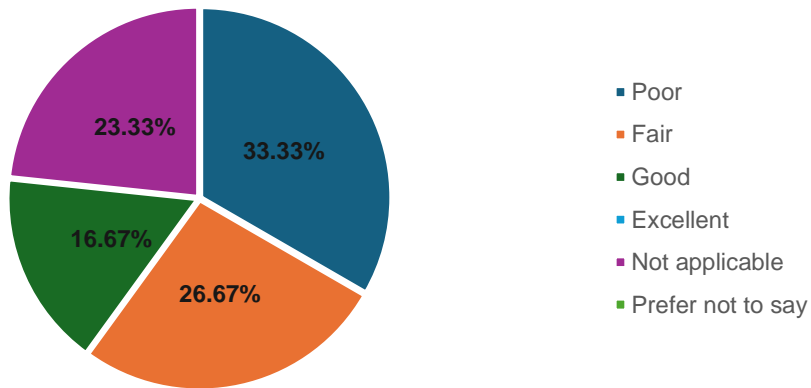


How would you describe the quality of the current road/highway system in the Abilene area?

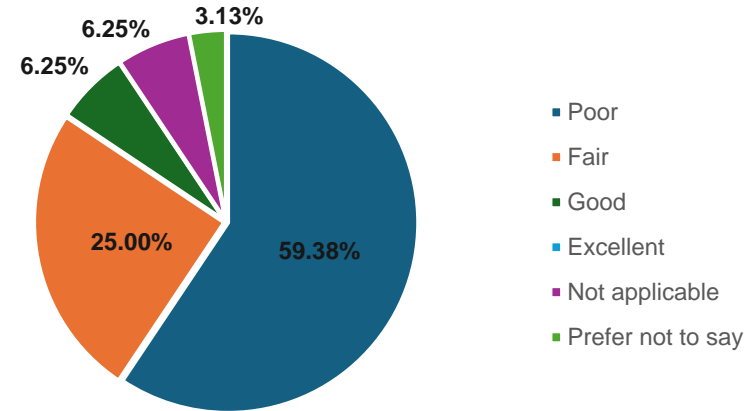


# Public Involvement Survey

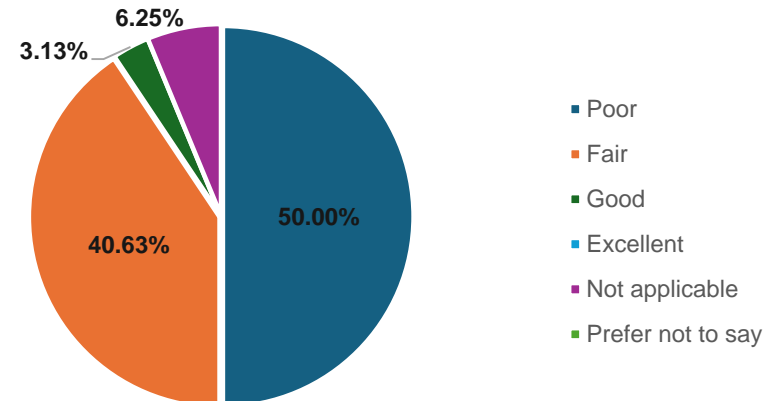
How would you describe the quality of the current transit/bus system in the Abilene area?



How would you describe the quality of the bicycle system in the Abilene area?

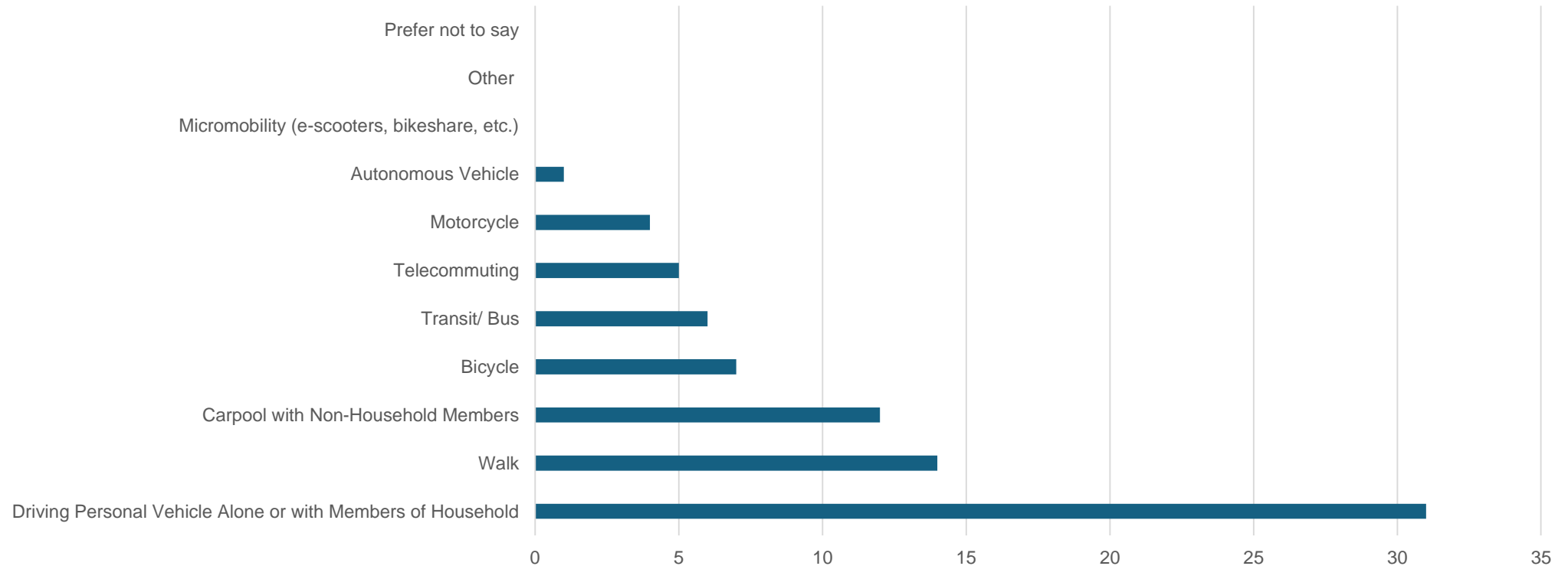


How would you describe the quality of the sidewalk/pedestrian system in the Abilene area?



# Public Involvement Survey

In the last 3 months, which modes of transportation have you used?



# MPO Planning Documents

## Transportation Improvement Program

- 4-year project program

## Ten-Year Plan

- 10-year project plan to match TxDOT's UTP and MTP

## Metropolitan Transportation Plan

- 25-year project plan
- Current system assessment
- Future needs and strategies

# Project Solicitation

## Projects from 2045 MTP: Funded List

Location	From	To	Work Description	Construction Cost	2045 MTP Project Ranking
US 83	North of FM 707	Near Antilley Rd	Add Frontage Rd at US 83 Connecting to FM 707 to Antilley Rd	\$ 7,000,001	24
US 83	1.0 miles north of FM 3034	Taylor County Line	Construct New Overpass	\$ 22,525,000	13
FM 89 (Buffalo Gap Rd)	Rebecca Ln	Just North of US 83	Access Management/Intersection Improvements	\$ 12,775,001	3
FM 89 (Buffalo Gap Rd)	Near Bettes Ln	Rebecca Ln	Access Management	\$ 10,970,001	5
FM 3034	US 83	Near PR 343	Rehab and Widen	\$ 3,735,000	29
FM 89 (Buffalo Gap Rd)	Antilley Rd Intersection		Lower Profile/Intersection Improvements	\$ 2,000,000	12
IH 20	SH 351	Callahan County Line	Add two main lanes for a six lane freeway and replace overpass structures	\$ 268,159,748	7
IH 20	FM 600	SH 351	Add two main lanes for a six lane freeway and construct overpass structures	\$ 104,765,617	1



# Project Solicitation

## Projects from 2045 MTP: Funded List

Location	From	To	Work Description	Construction Cost	2045 MTP Project Ranking
FM 707	FM 89 (Buffalo Gap Rd)	US 83	Rehab and widen Roadway	\$ 14,493,440	10
FM 707	US 83	FM 1750 (Oldham Ln)	Widen to 4 Lanes with Center Turn Lane, sidewalks, and intersection improvements at FM 1750	\$ 10,000,000	16
E N 10th St	Griffith Rd	Loop 322	Widen to 4 lanes and include turn lanes	\$ 5,400,000	25
Hartford	at Little Elm Creek		Bridge to Replace Low Crossing	\$ 1,000,000	14
Maple St	S 11th St	S 27th St	Widen to 4 lanes and include turn lanes	\$ 7,400,000	20
Maple St	S 27th St	Industrial Blvd	Widen to 4 lanes and include turn lanes	\$ 3,600,000	22
Maple St	Industrial Blvd	Loop 322	Widen to 4 lanes and include turn lanes	\$ 3,600,000	18
Maple St	County Rd 111-1 (Colony Hill Rd)	FM 707	Widen to 4 lanes and include turn lanes	\$ 4,800,000	15

# Project Solicitation

## Projects from 2045 MTP: Funded List

Location	From	To	Work Description	Construction Cost	2045 MTP Project Ranking
Marigold St	FM 3438 (Arnold Blvd)	Wall St	Rehabilitate, Add Bridge, Shoulders and Turn Lanes	\$ 1,500,000	23
IH 20	Near Catclaw Creek	FM 600	Add two main lanes for a six lane freeway and replace overpass structures	\$ 206,936,139	2
IH 20	Abilene West City Limits	Near Catclaw Creek	Add two main lanes for a six lane freeway and replace overpass structures	\$ 224,000,000	8
US 83	S 7th St	N 10th St	Widening existing US 83 freeway to six-lanes and reconstructing ramps	\$ 250,000,000	4
US 83	N 10th St	IH 20	Widening existing US 83 freeway to six-lanes and reconstructing ramps	\$ 250,000,000	9
Business I-20	Loop 322	Elmdale Rd	Rehabilitate , Add Shoulders, & Turn Lanes	\$ 5,200,000	17
SL 322	IH 20	SH 351	Construct New 2 Lane Highway of Future 4 Lanes with Access Control	\$ 75,000,000	33
FM 1082	West of Cheyenne Creek Road	East of Dam	New Roadway north of FM 1082 (Relocate FM 1082 at Ft. Phantom Dam)	\$ 8,078,457	27.5
US 83	Jones County Line	Near W. Summit Rd	Construct New Overpass	\$ 5,078,000	13.5

# Project Solicitation

## Projects from 2045 MTP: Funded List

Location	From	To	Work Description	Construction Cost	2045 MTP Project Ranking
SL 322	North of SH 36 (BI 20)	FM 1750	Traffic Improvements on SH 36, Possible Texas Turnaround at Loop 322, Possible ramp realignment	\$ 10,000,000	TBD
BU 83 and Pine Street	IH 20	Ambler Avenue	Intersection Improvement with addition of Bike Lanes and Sidewalks	\$ 5,000,000	TBD
FM 89 (Buffalo Gap Rd)	South MPO Limits (Elm Creek)	FM 707	Three-Lane Road with Right-Turn Lanes at major sidestreets	\$ 5,000,000	TBD
SL 322	IH-20 EB	IH-20 WB	Direct Connect Ramps from Loop 322 to I-20 EB and WB	\$ 120,000,000	TBD
US 83	Near Industrial Blvd.	FM 89 (Buffalo Gap Rd)	Intersection Improvements with addition of Bike Lanes and Sidewalks	\$ 5,000,000	TBD
FM 3034	Near PR 343	FM 600	Rehab and Widen	\$ 3,100,000	29.5

# Project Solicitation

## Projects from 2045 MTP: Illustrative List

Location	From	To	Work Description	Construction Cost	2045 MTP Project Ranking
E S 27th St	Maple St	FM 1750 (Oldham Ln)	Widen to 4 Lanes with Center Turn Lane	\$4,700,000	28
US 83	FM 707	FM 204 (Clark Rd)	Add Frontage Roads	\$13,600,000	37
FM 1750 (Oldham Ln)	0.5 Miles South of FM 707	FM 204 (Clark Rd)	Widen to 4 Lanes	\$6,500,000	30
FM 1750 (Oldham Ln)	Industrial Blvd	0.5 Miles South of FM 707	Widen to 4 Lanes	\$15,800,000	32
FM 89 (Buffalo Gap Rd)	South of Chimney Rock Rd	South of Antilley Rd	Widen to 6 Lanes with Access Control	\$5,000,000	6
Iberis (CR 164 & CR 338)	US 83	FM 89 (Buffalo Gap Rd)	Rehabilitate, Add Shoulders	\$7,100,000	31
Industrial Blvd	Loop 322	FM 1750 (Oldham Ln)	Widen to 4 Lanes with Center Turn Lane	\$2,300,000	27
New Roadway	Southwest Dr	US 277	New roadway between Winters Fwy & Dub Wright Blvd (Public Comment)	\$4,500,000	36
Loop 322 Frontage Rd	FM 1750 (Oldham Ln)	Business I-20	Operational Improvements	\$18,000,000	19

# Project Solicitation

## Projects from 2045 MTP: Illustrative List

Location	From	To	Work Description	Construction Cost	2045 MTP Project Ranking
Memorial Dr	Preston Trail	US 83	Extend roadway (Public Comment)	\$1,300,000	34
Memorial Dr	Ridge Crossing	FM 707	Extend roadway (Public Comment)	\$4,700,000	35
SH 36	1.2 Miles South of FM 18	FM 1750 (Oldham Ln)	Widen to 4 Lanes	\$27,900,000	21
US 83 Frontage Rd	FM 2404 (Old Anson Rd)	FM 3034	Change Frontage Road Operations	\$12,000,000	26

# Project Solicitation

## Projects from TxDOT and Member Cities

Location	From	To	Work Description
FM 1750	at E South 27th St		Evaluation and upgrades to all traffic and pedestrian infrastructure
FM 1750	at Colony Hill Rd		Traffic signal upgrades
Bus US 83	at E South 11th St		Traffic signal upgrades
Oldham Lane	at E South 11th St		Traffic signal upgrades
Maple Street	at E South 11th St		Traffic signal upgrades
IH 20 Access Road*	at FM 707		Convert from 2-way stop to a 4-way stop
FM 1750	at Hardison Ln		Evaluation and upgrades to all traffic and pedestrian infrastructure
N 1st St	at Humphreys Village Rd		Add turning lane for residents of Humphreys Village
SL 322	at Maple St		Bridge improvements
FM 18	at SH 36		Intersection upgrades incl new traffic signals
FM 1750	at SH 36		Evaluation and upgrades to all traffic and pedestrian infrastructure



# Project Solicitation

## Projects from TxDOT and Member Cities

Location	From	To	Work Description
SL 322	at SH 36		Improvements to this intersection and surrounding access roads
FM 1750	at SL 322		Evaluation and upgrades to all traffic and pedestrian infrastructure; upgrade flashing beacons to operational traffic signals
Bankhead Hwy (Old US-80)	Bus IH 20 Near South St*	Bus IH 20 Near Steffens St*	Roadway repair
Oldham Lane	E South 27th St	Hardison Lane	Traffic signal upgrades
IH 20 North Access Rd	FM 707	Spinks Rd	Add sidewalks
IH 20 South Access Rd	FM 707	Spinks Rd	Add sidewalks
North Street	FM 707	Market St	Add sidewalks
IH 20	IH 20 at Tye City Limit (West)	IH 20 at Tye City Limit (East)	Rearrange all of the entrance and exit ramps within the city limits
Treadaway Blvd	N 1st St	IH 20	Intersection upgrades incl upgraded traffic signals
Kent St	N 1st St	N 2nd St	New sidewalks

# Project Solicitation

## Projects from TxDOT and Member Cities

Location	From	To	Work Description
8th St	near Jim Ned High School (830 Garza Ave, Tuscola, TX 79562)		Traffic study during school hours
IH 20 North Access Rd	near Taylor Telecom (9798 I-20, Merkel, TX 79536)*		Roadway repair
FM 126	S 1st St	*TBD	Storm water runoff/drainage improvements
New Airport Access Rd.	TBD*		Intersection upgrades incl new traffic signals
FM 707	Tye City Limit (South)	IH 20	Add sidewalks
CityLink (1189 S 2nd Street, Abilene, TX 79602)			*Multimodal project; EV

# Project Solicitation

## Projects from Public Input

Location	From	To	Work Description
N 6th St	Abilene High School	Abilene Civic Center	Add sidewalks
Old Anson Rd	Anson Ave	Vogel St	Add sidewalks
Garza Ave	at 8th St		Reduce congestion
Griffith Rd	at E North 10th St		Add traffic signals
SL 322	at E North 10th St		Improve access/add traffic signals
Garza Ave	at Graham St		Add traffic signals
Danville Dr	at Industrial Blvd		
US 80	at SL 322		Interchange improvements
US 83/84 (Winters Fwy)	at SL 322		Add additional lane
FM 707	at US 83/84 Access Rd		Add right turn lane

# Project Solicitation

## Projects from Public Input

Location	From	To	Work Description
S 20th St	Bowie Elementary School (2034 Jeanette St, Abilene, TX 79602)	*TBD	Add sidewalks
S 11th St	Butternut St	Expo Dr	Add sidewalks
Hartford St	Corsicana St	*TBD	Add sidewalks
US 277	Dub Wright Blvd	Twilight Trl	Add sidewalks
Griffith Rd	E North 10th St	Marathon Rd	Add sidewalks
Oldham Lane	E South 27th St	E South 11th St	Add sidewalks
Griffith Rd	Marathon Rd	Stamford Rd	Widen roadway; add shoulders; add turning lanes
E North 10th	N Treadaway Blvd	Judge Ely Blvd	Add protected bike lanes
S 7th Street	Pioneer Dr	Winters Freeway	Roadway repair
S 11th St	S Treadaway Blvd	Judge Ely Blvd	Add protected bike lanes or add off-road bike/pedestrian trail

# Project Solicitation

## Projects from Public Input

Location	From	To	Work Description
IH 20	at SL 322		New interchange
Near Griffith & IH 20 & 351			Add new roadway/connection
Catclaw Dr	*TBD		Add traffic signals
Near downtown	*TBD		Add new loop roadway focused on bike and pedestrian ammenities
US 83 near Jim Ned HS			Reduce congestion, add overpass
Saddle Creek Estates (multiple streets)			Add curbs to reduce street deterioration
IH 20	at Exit 299 (Clyde, TX)		Move exit ramp

# Project Solicitation

What Other Projects Should be Included in the 2050 MTP?



# Questions?

# Workshop Wrap-up

**THANK YOU  
TO EVERYONE FOR  
YOUR PARTICIPATION  
TODAY.**





## **8. Adjournment.**



**Our next meeting is: October 15, 2024  
Thank you for all you do for transportation!**